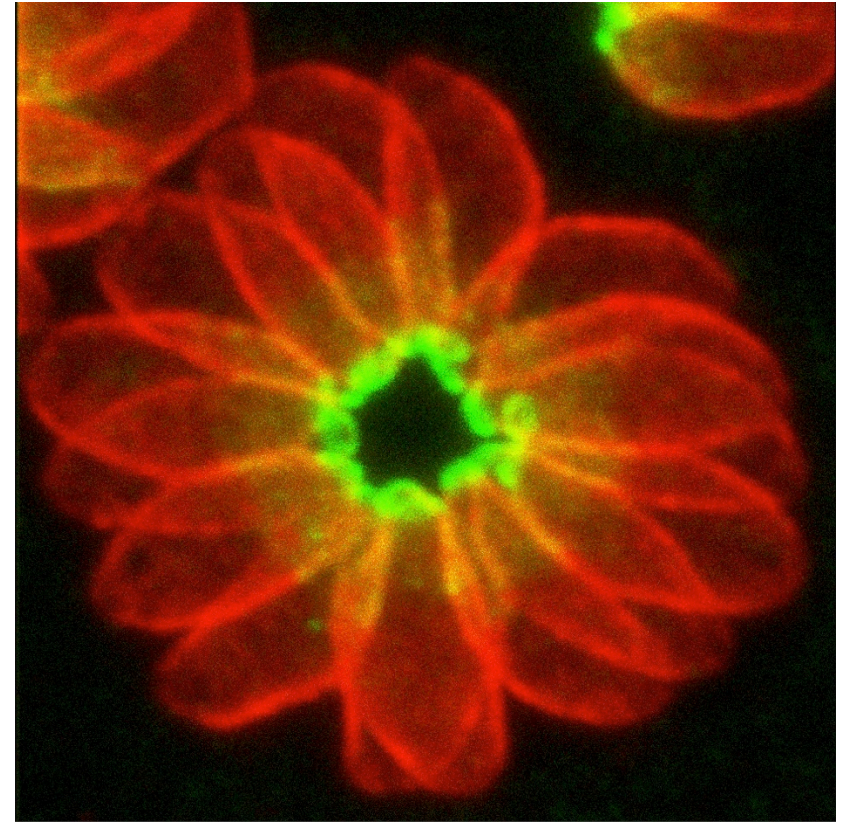


Toxoplasma gondii tachyzoites

Phenotypic analysis of mutants



From J-F.Dubremetz



Toxoplasma gondii tachyzoite culture

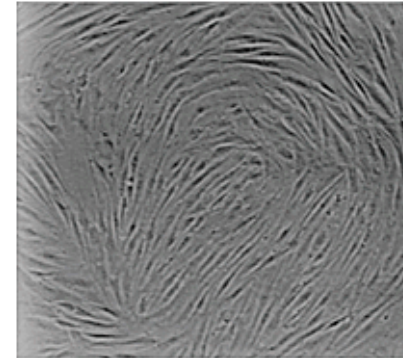


Incubator

- 37°C
- 5% CO₂

Host cell

- HFF Human foreskin fibroblasts
- VERO cells



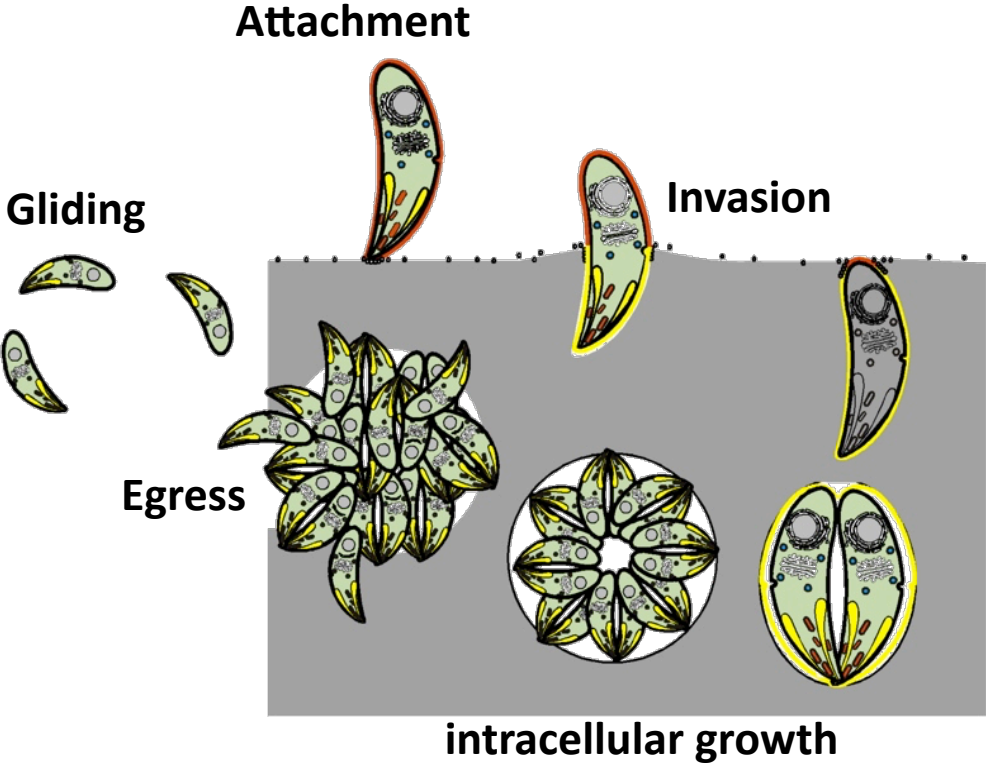
Medium

- DMEM (Dulbecco's Modified Eagle Medium), high glucose
- FCS: fetal calf serum
- L-Glutamine
- Gentamycin



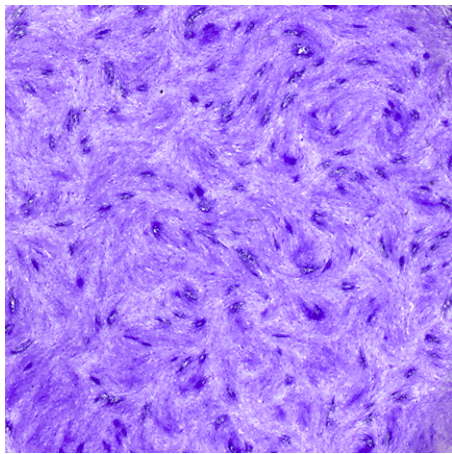
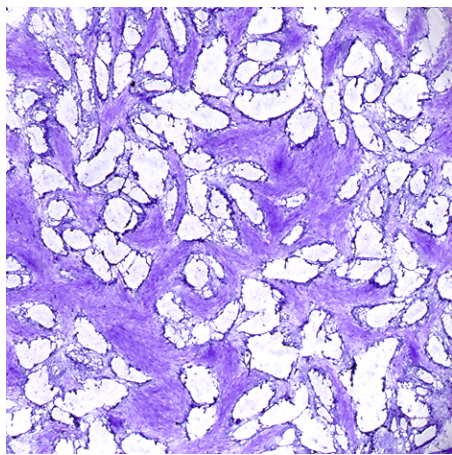
P2 lab !!

Lytic cycle of *Toxoplasma gondii* tachyzoites



48 h for one lytic cycle

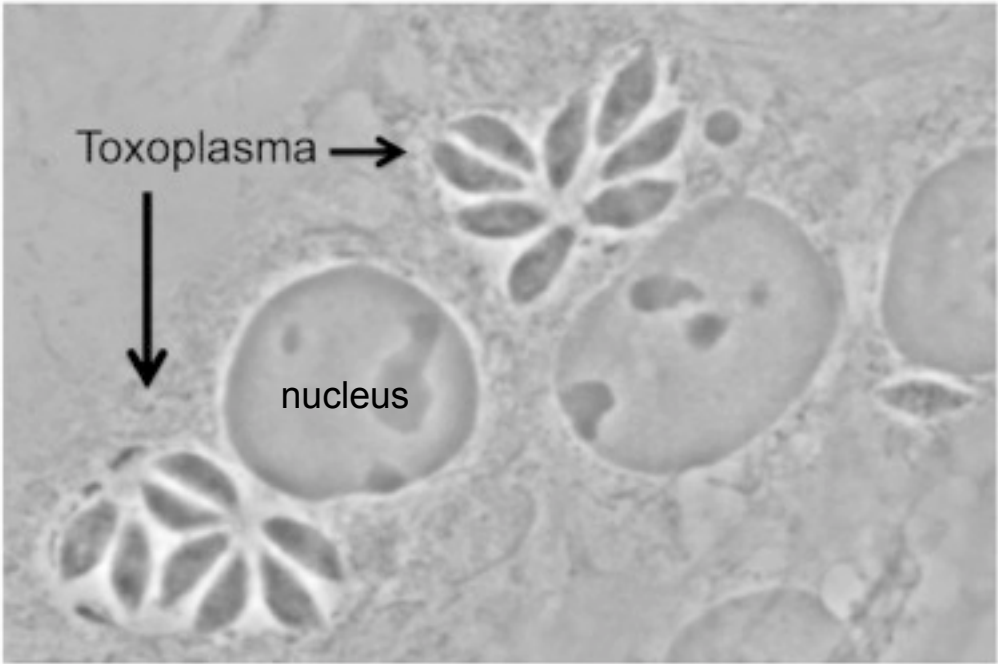
Lysis plaques



fixed after 7 days
stained with crystal violet

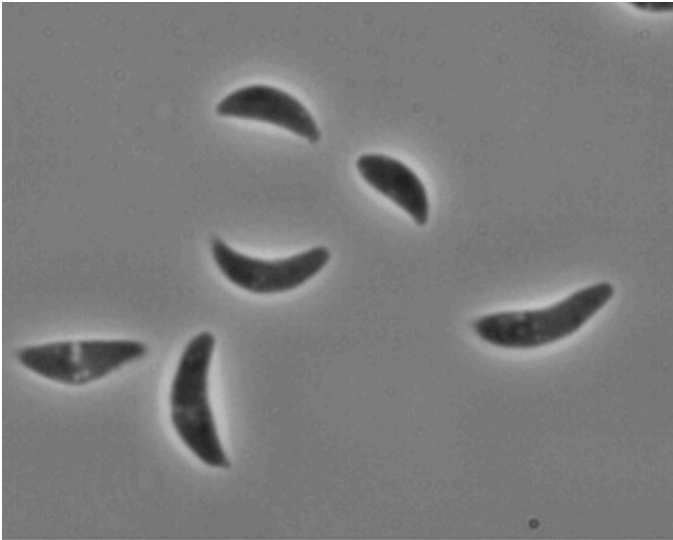
Toxoplasma gondii tachyzoites

Intracellular

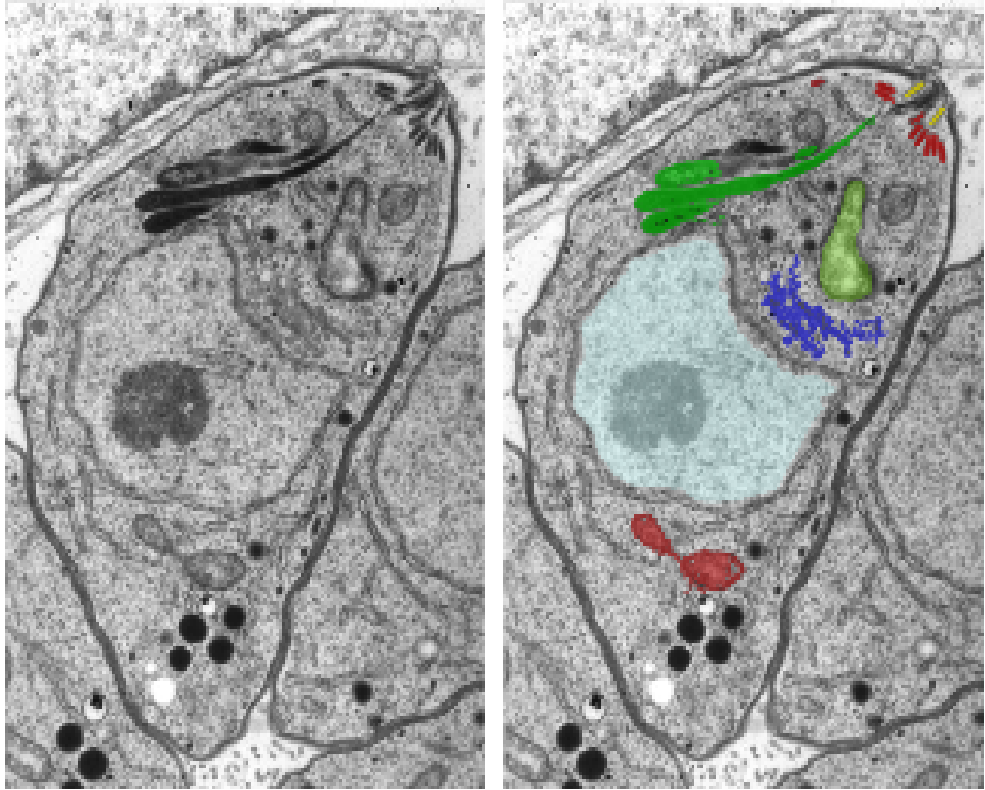
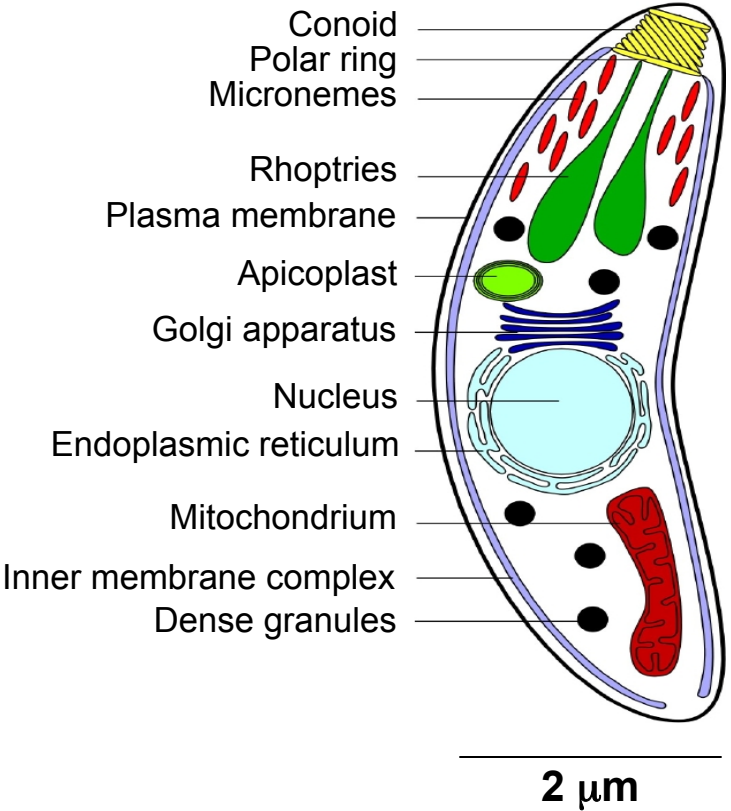


From M-A. Hakimi

Extracellular

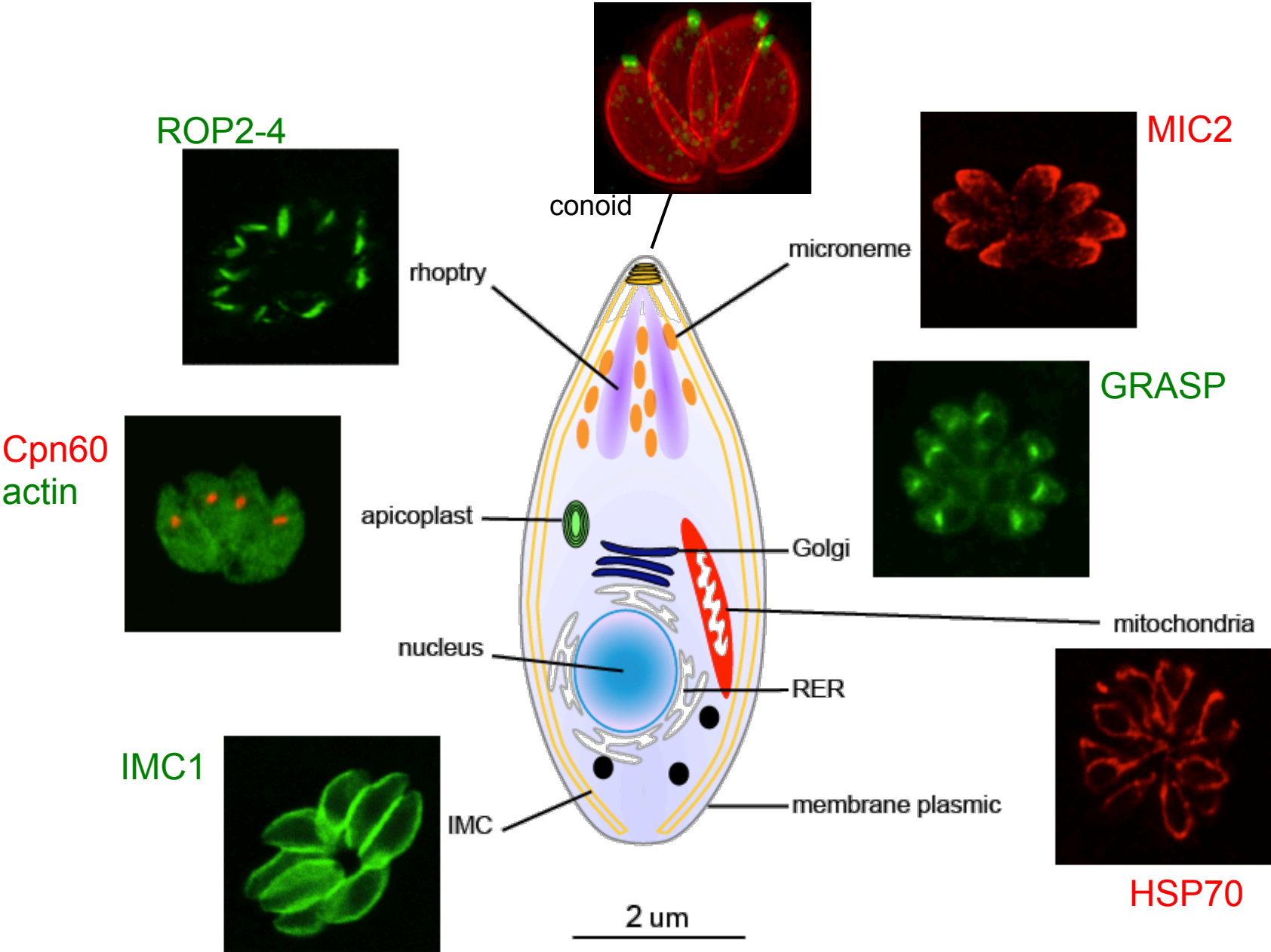


Ultrastructure of *Toxoplasma gondii* tachyzoite: organelles

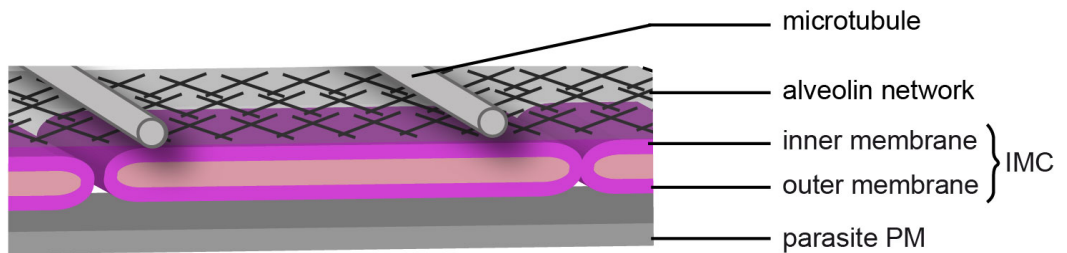
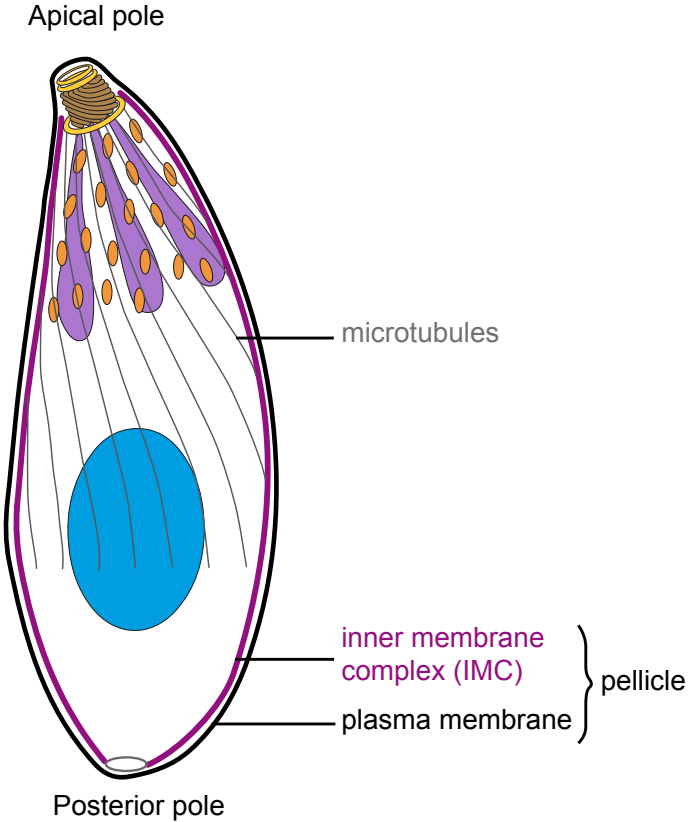
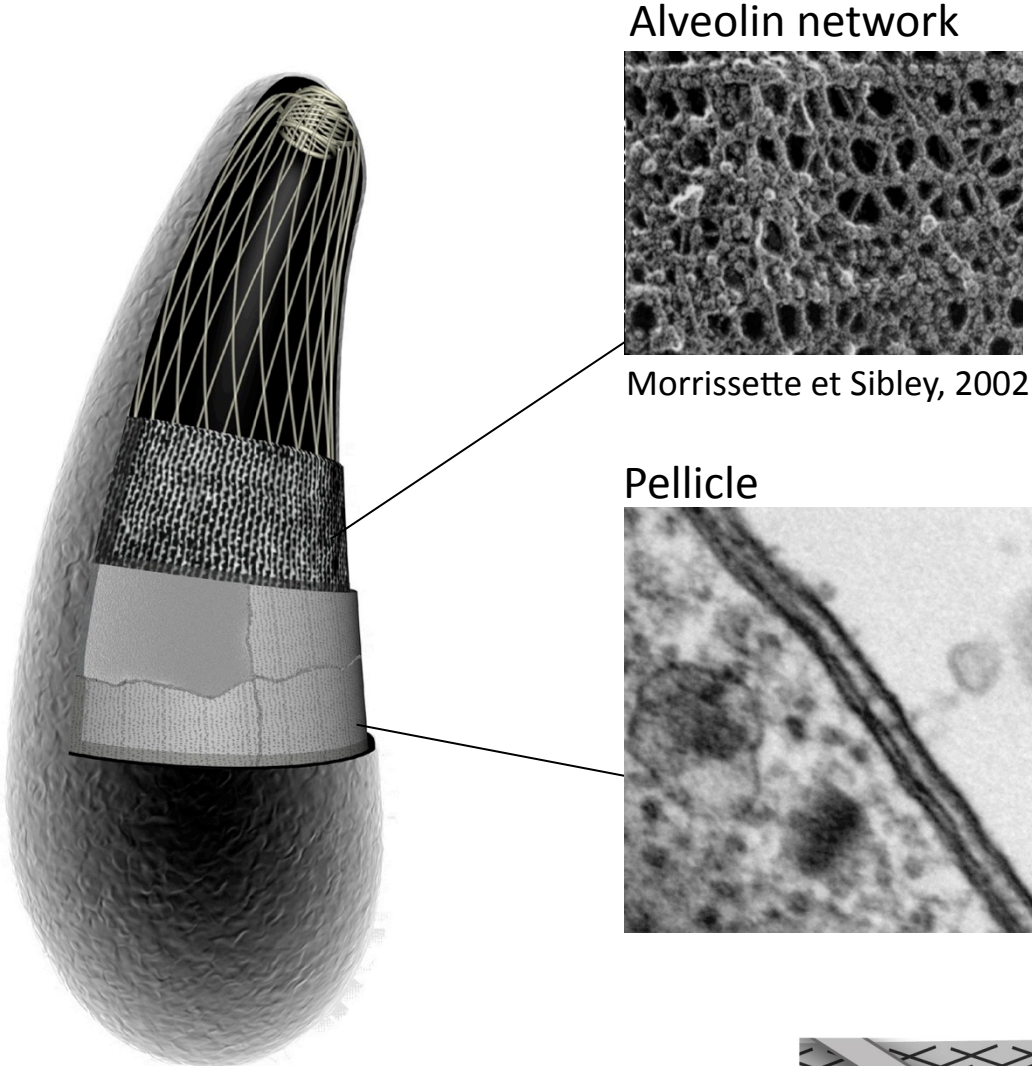


From J-F.Dubremetz and T. Dowse

Integrity and positioning of organelles by immunofluorescence

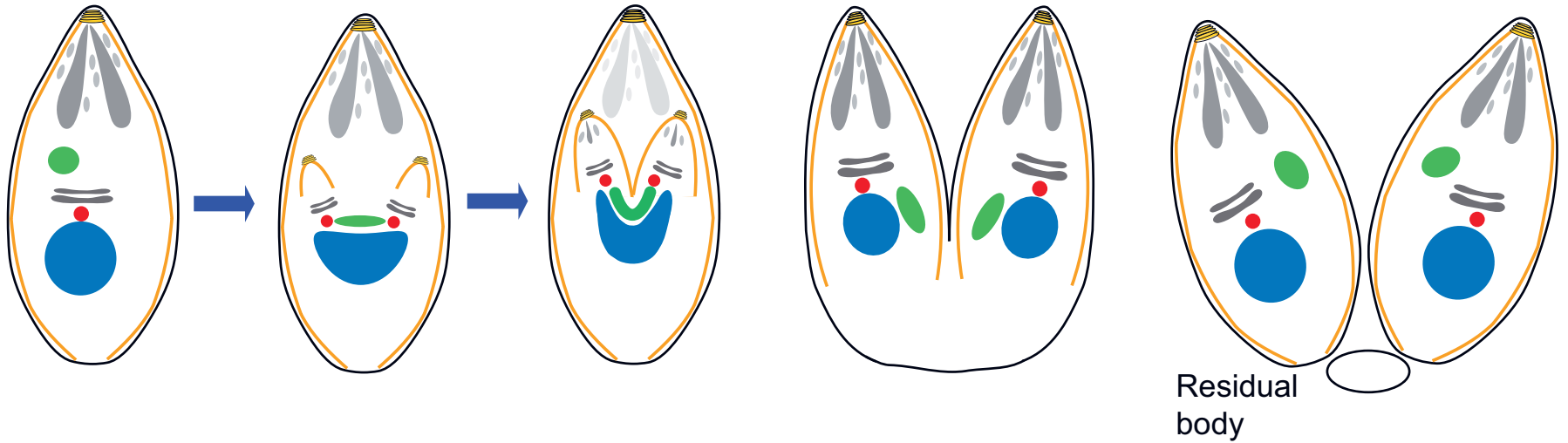


Ultrastructure of *Toxoplasma gondii* tachyzoite: cytoskeleton

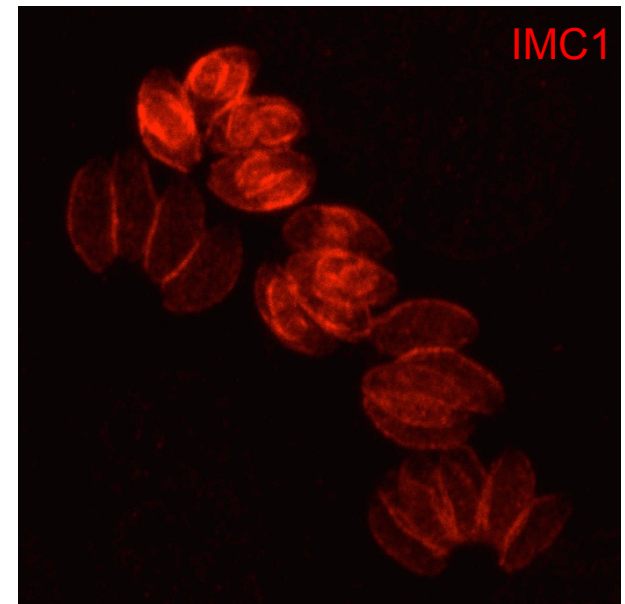


Division of *Toxoplasma gondii* tachyzoite

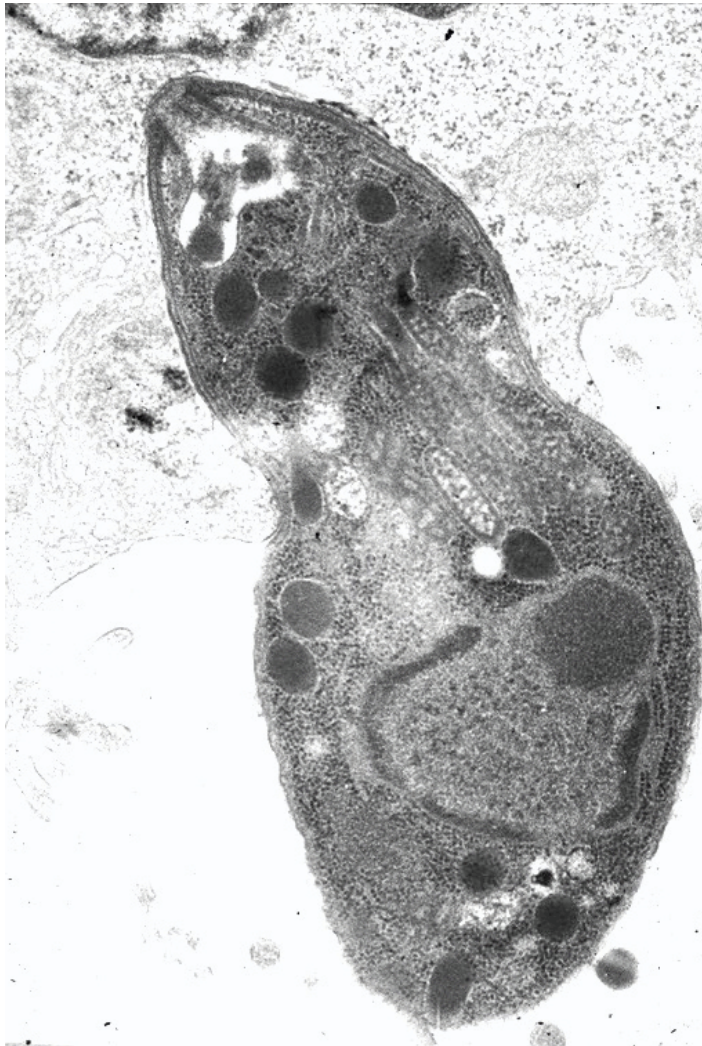
- Replication by endodyogeny and organization in rosettes



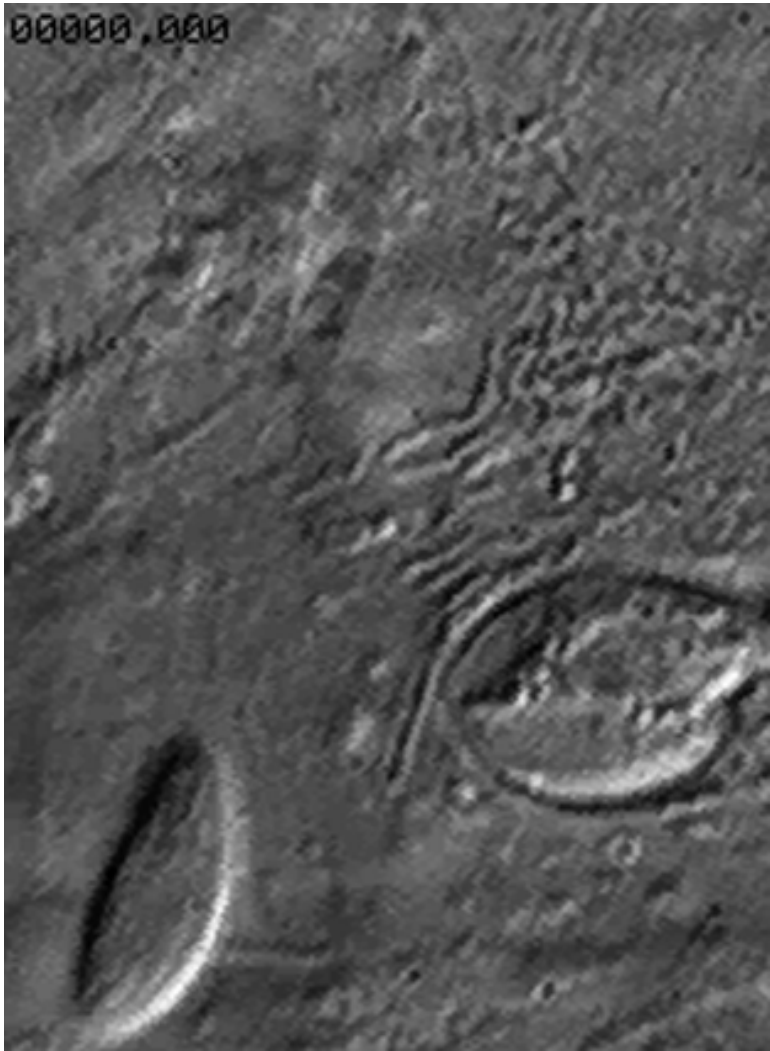
- Asynchronous culture but synchronized replication within each parasitophorous vacuole



Motility and invasion

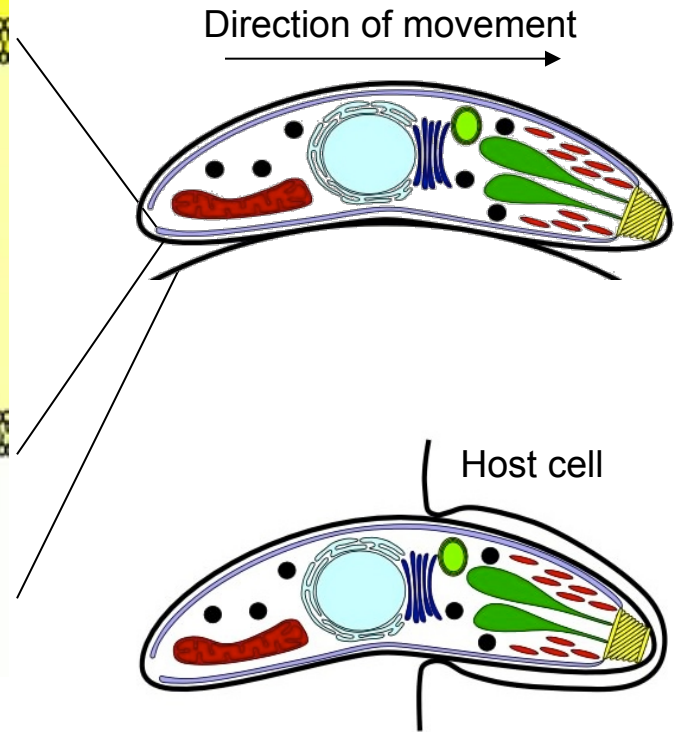
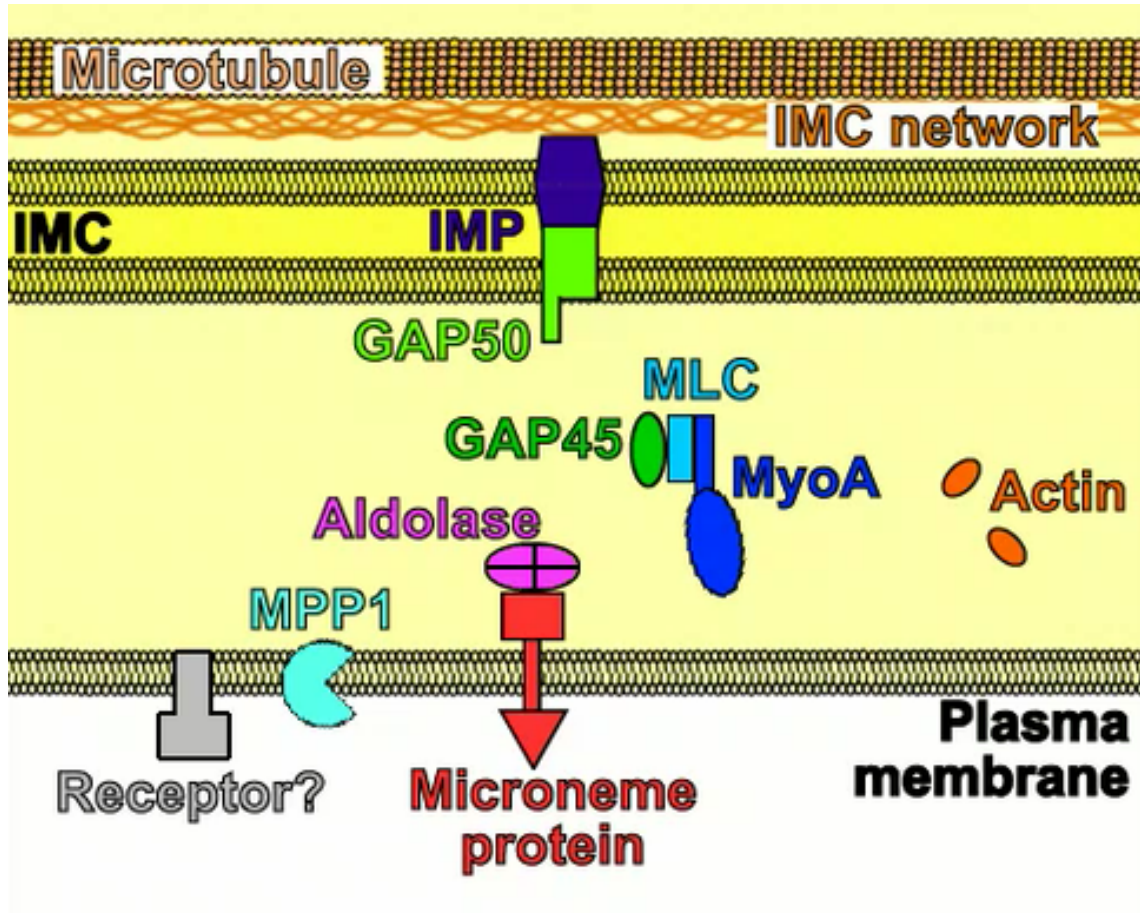


From J-F.Dubremetz



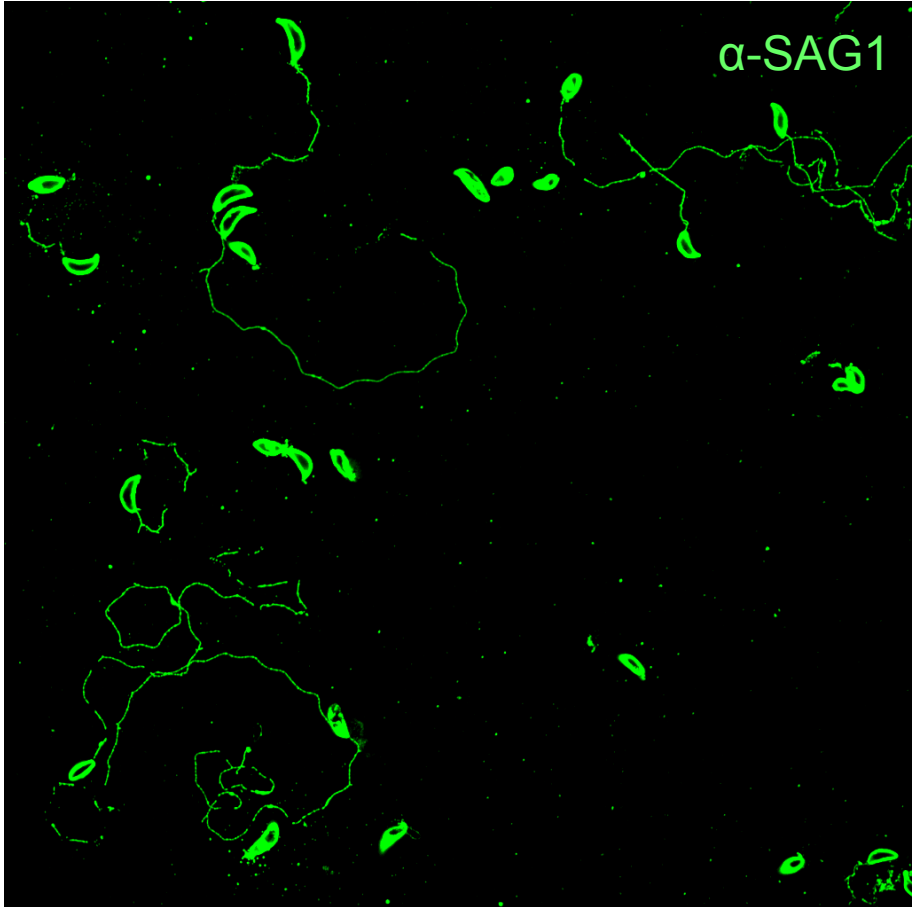
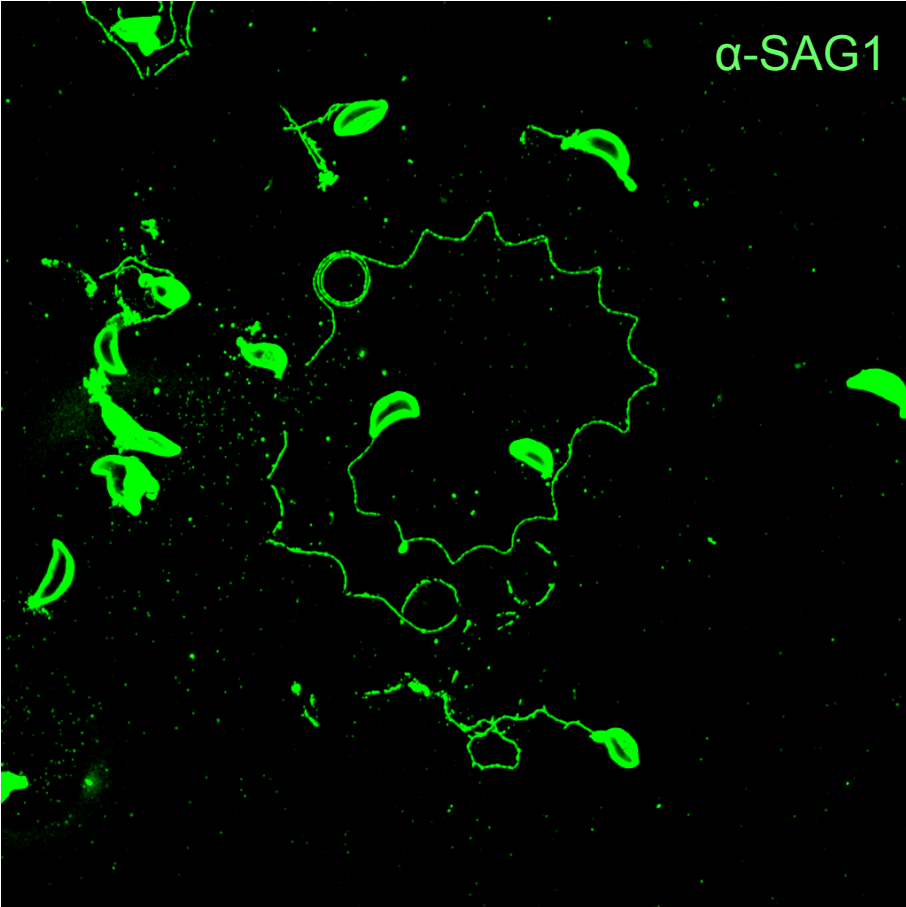
Movie from G. Ward
<http://sbb.uvm.edu/~gward/Movies.html>

The gliding motility relies on the glideosome

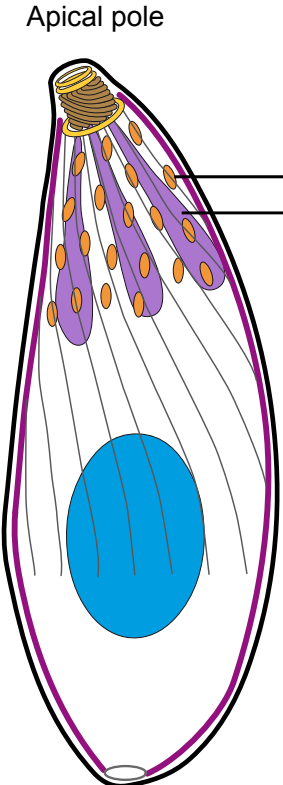
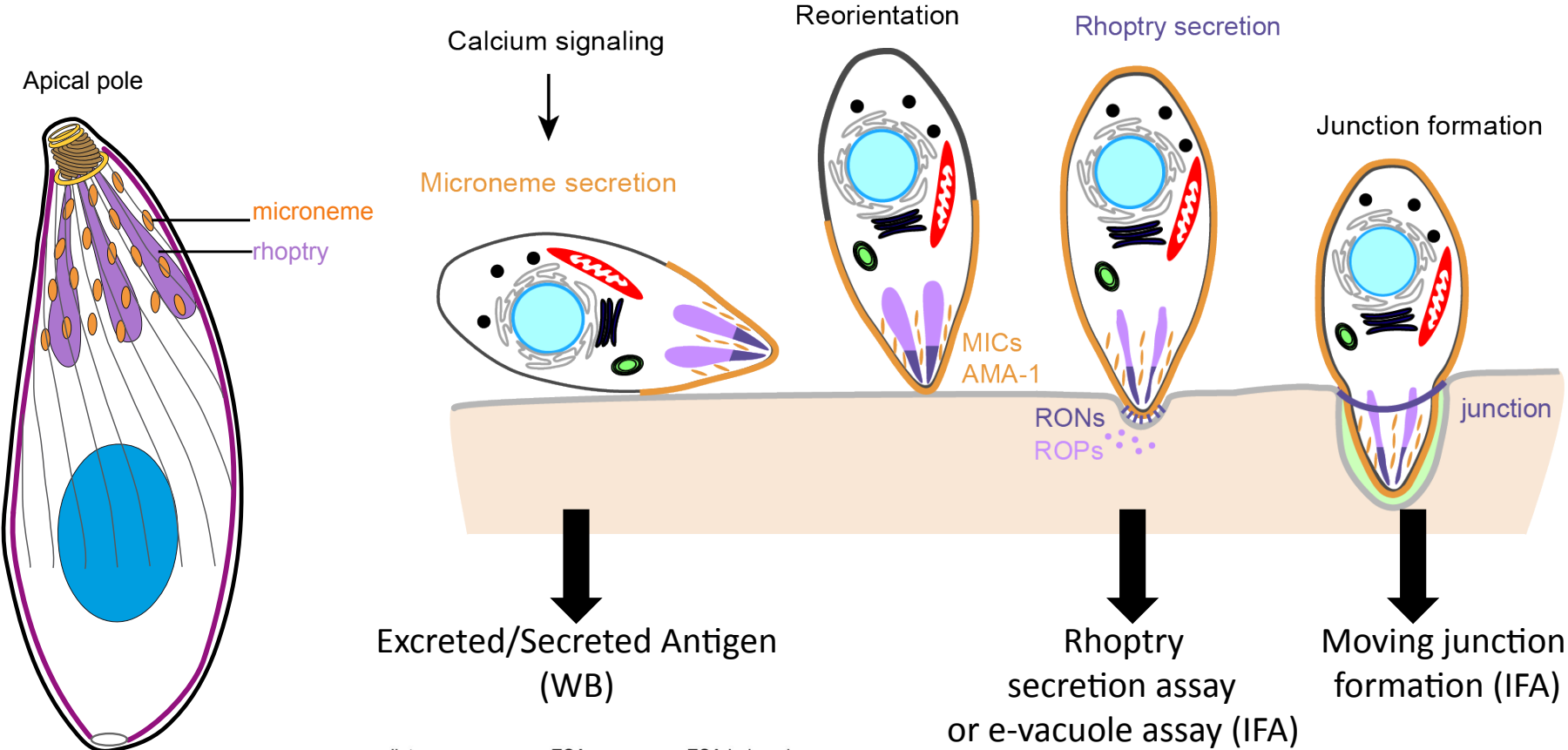


Movie from Soldati *et al.*, Trends in Parasitology, 2004

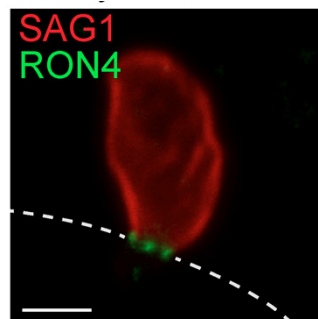
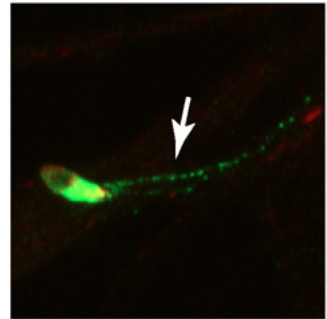
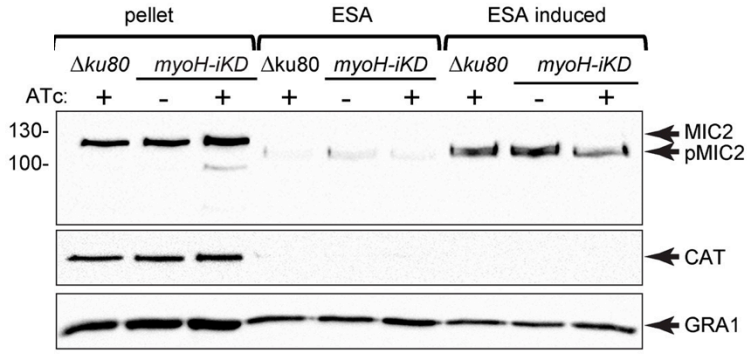
Gliding assay on poly-L-lysine coated coverslip



Apical secretory organelles and invasion



2 μm



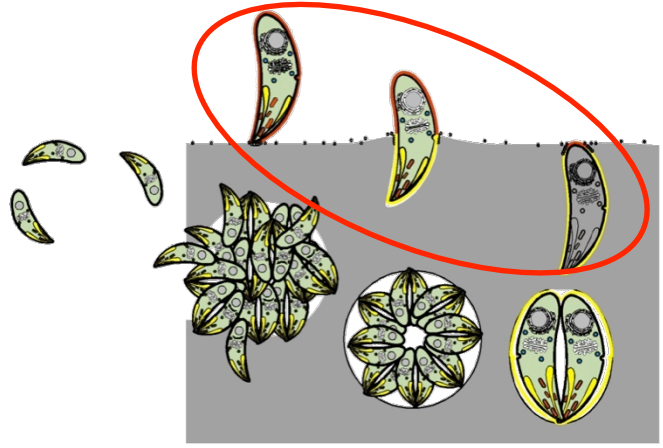
Invasion assay (red/green)

ASP3-iKD
and control
+/- ATc



Invasion
30 minutes at 37°C

Fixation and IFA



Immunofluorescence assay or IFA

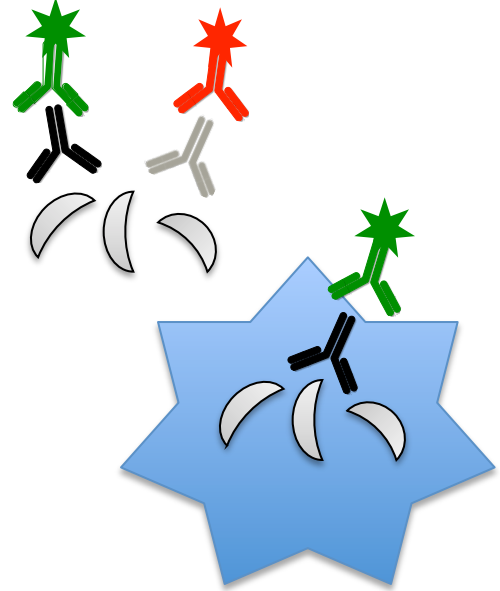
Step 1: **No permeabilization!!**

Staining of the extracellular parasites
(primary Ab: surface marker, ex: anti-SAG1)



Step 2: **after permeabilization!!**

Staining of the intracellular and extracellular parasites
(primary Ab: inside marker, ex: anti-GAP45 then secondary Ab)



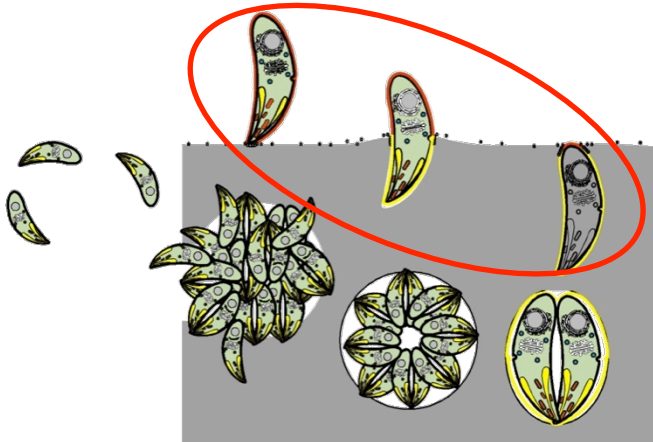
Invasion assay (red/green IFA)

ASP3-iKD
and control
+/- ATc



Invasion
30 minutes at 37°C

Fixation and IFA



Immunofluorescence assay or IFA

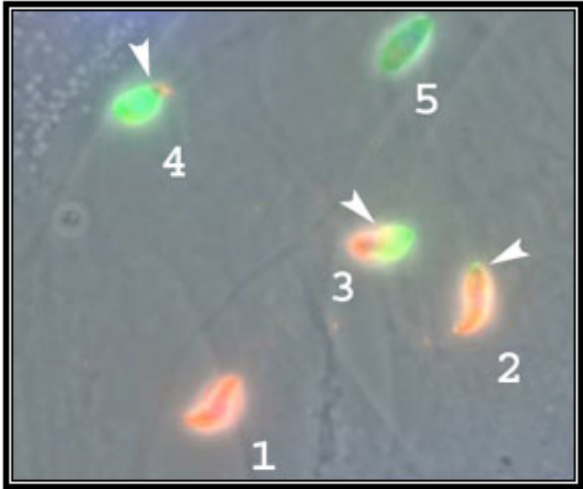
Step 1: **No permeabilization!!**

Staining of the extracellular parasites
(primary Ab: surface marker, ex: anti-SAG1)



Step 2: **after permeabilization!!**

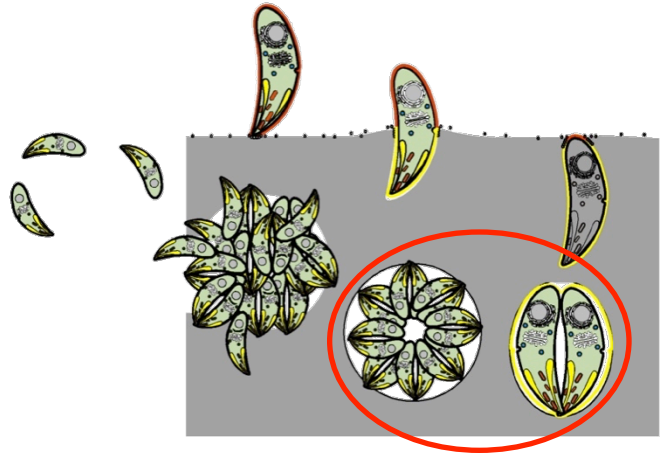
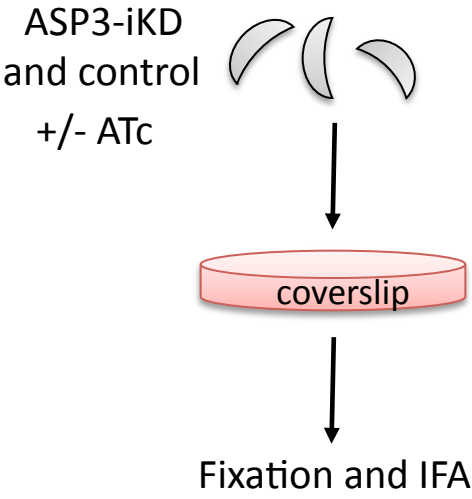
Staining of the intracellular and extracellular parasites
(primary Ab: inside marker, ex: anti-GAP45 then secondary Ab)



SAG1-red

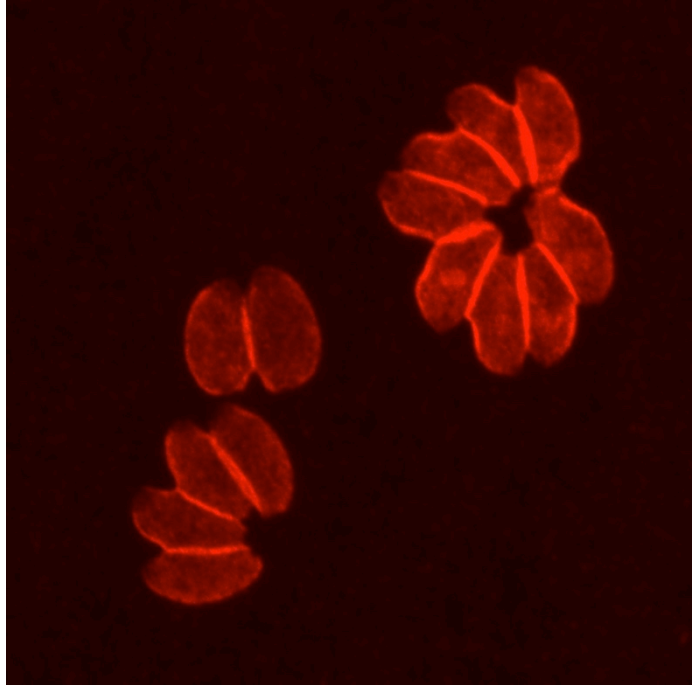
GAP45-green

Intracellular growth assay (IFA)



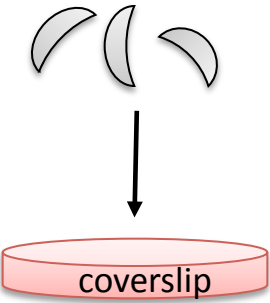
IFA

With **permeabilization**
(primary Ab: anti-GAP45, secondary Ab: anti-rabbit-Alexa594)



Ionophore-induced egress assay (IFA)

ASP3-iKD
and control
+/- ATc



Incubation
30 hours at 37°C

Stimulation with A23187 or DMSO
for 7 minutes 37°C

IFA

With permeabilization

(primary Ab: anti-GAP45, secondary Ab: anti-rabbit-Alexa594)

(primary Ab: anti-GRA3, secondary Ab: anti-mouse-Alexa488)

