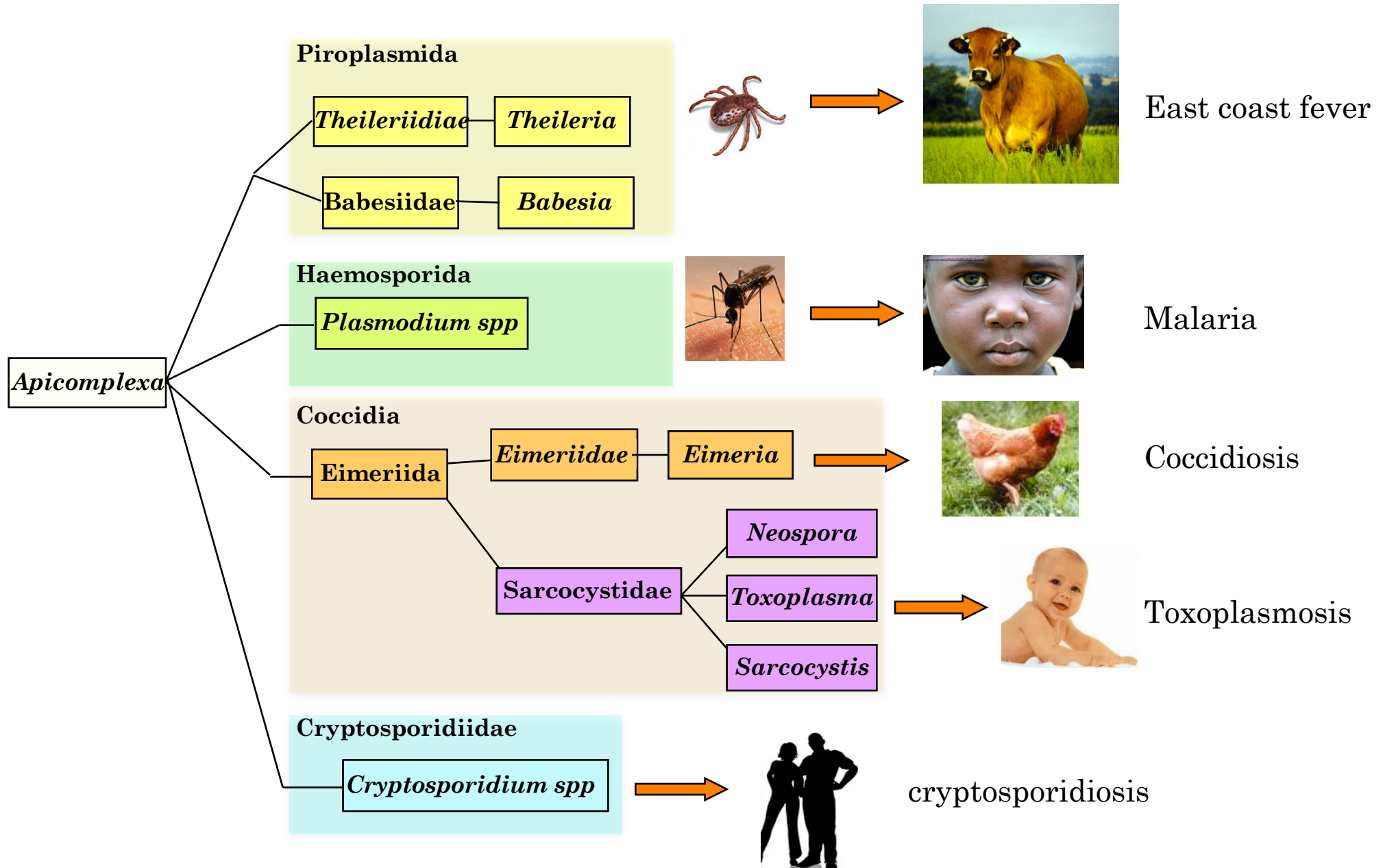


**Aspartyl proteases in *Toxoplasma gondii* and *Plasmodium falciparum***

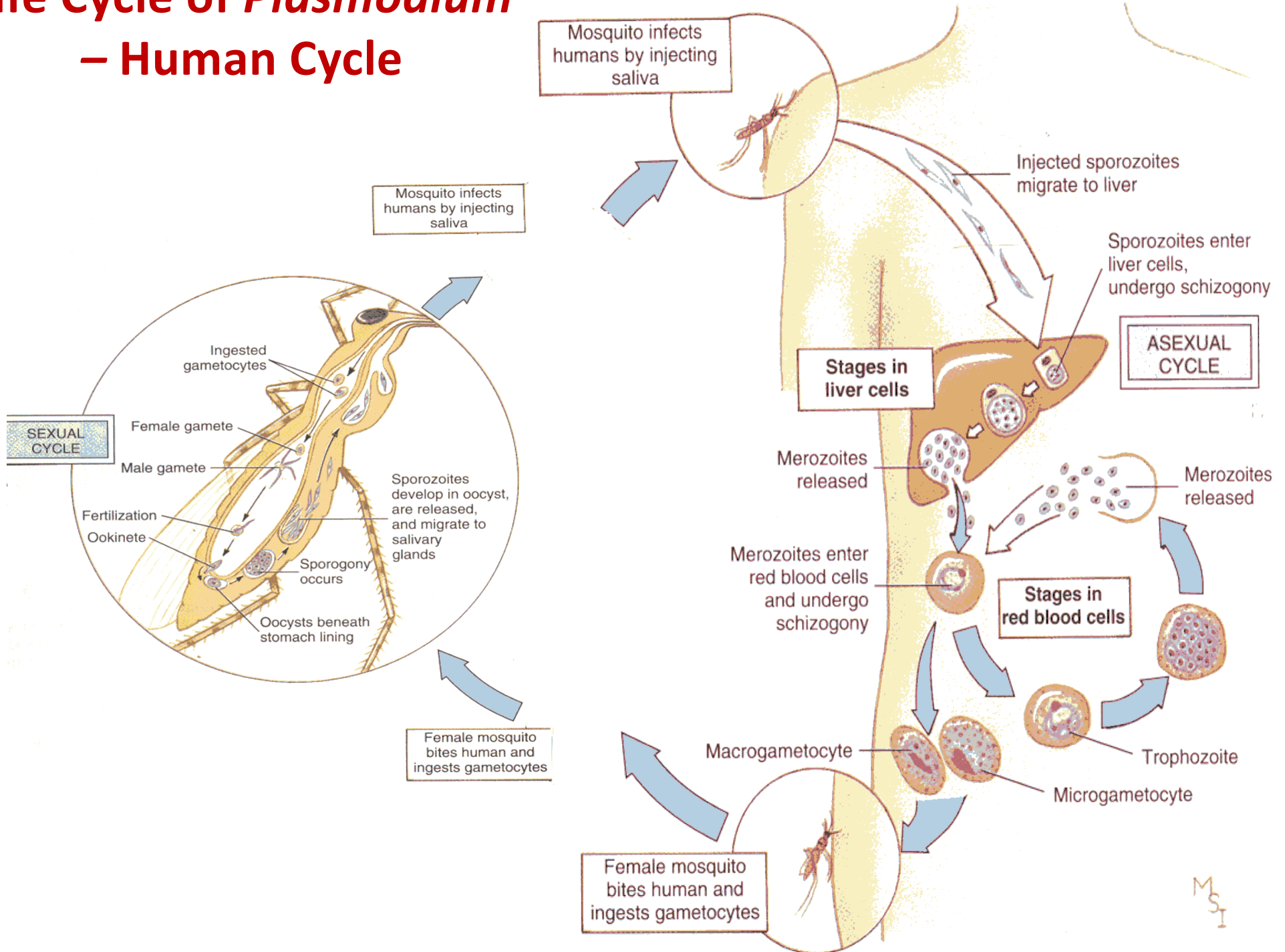
meBOP-Module II

Dima El Safadi  
Imen Mkada  
Assef Hamdan

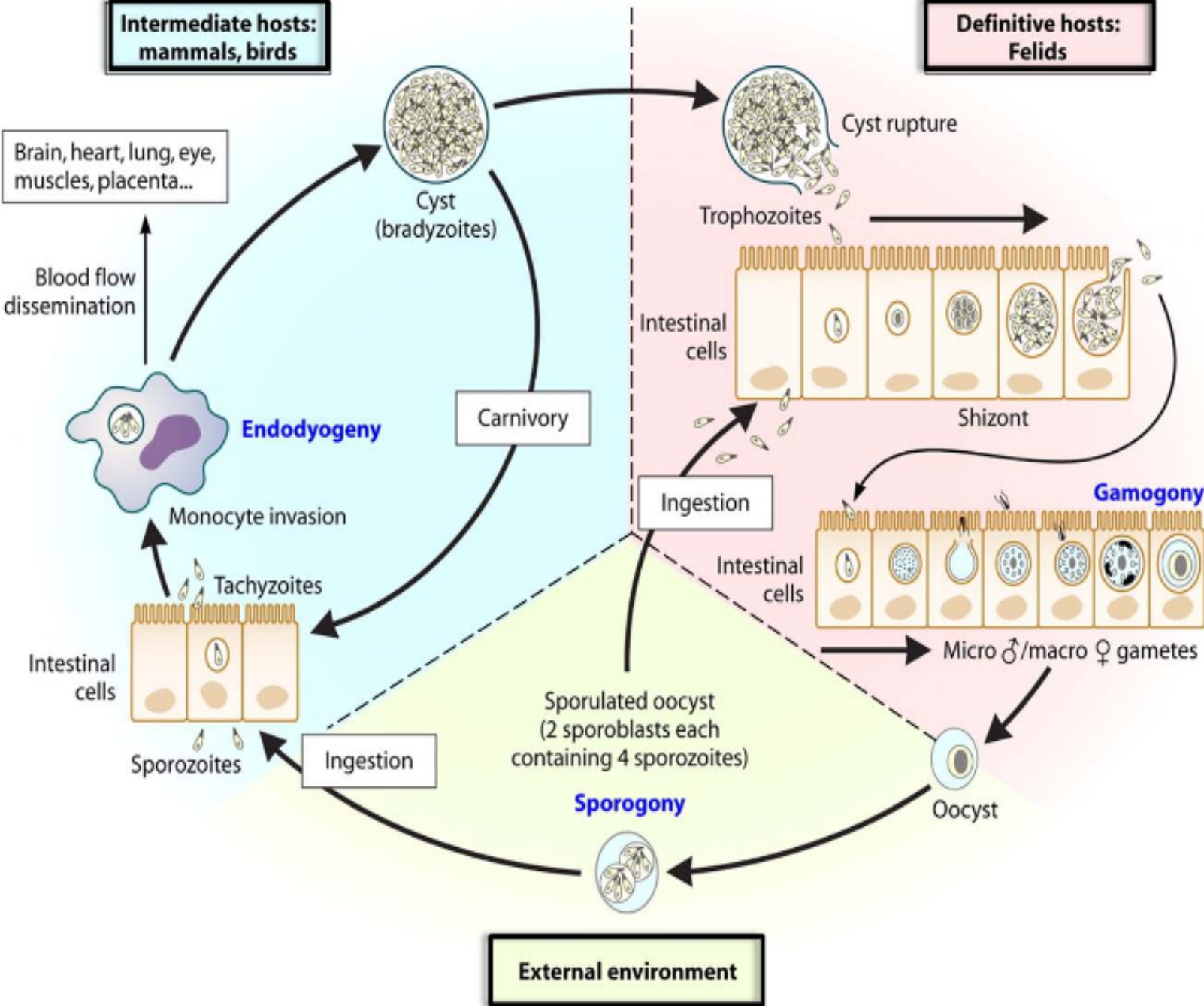
# Apicomplexans are human and animal pathogens



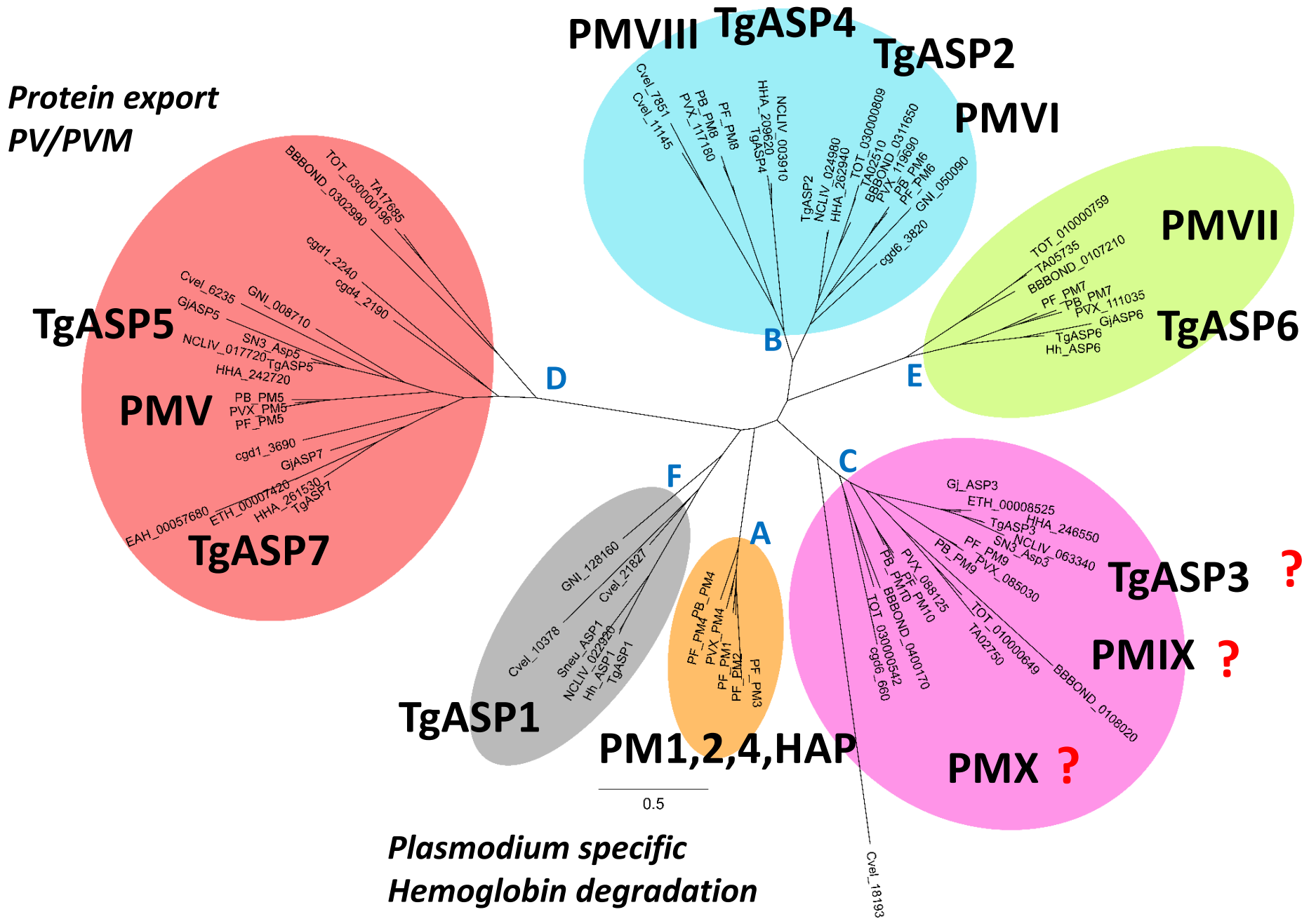
# Life Cycle of *Plasmodium* – Human Cycle



# Life Cycle of *Toxoplasma* – Human Cycle



# Apicomplexan ASPs follow 6 distinct groups



## *ASP3 Knockdown inducible system (Asp3-iKD)*

- Intracellular parasites
- ASP3 Knockout → lytic cycle of parasite (**ASP3 play an important role in the life cycle**)
- ASP3 Knockdown inducible system (Asp3-iKD)

# *ASP3 knockdown displays a severe lytic cycle defect*

## *Plaque Assay*

