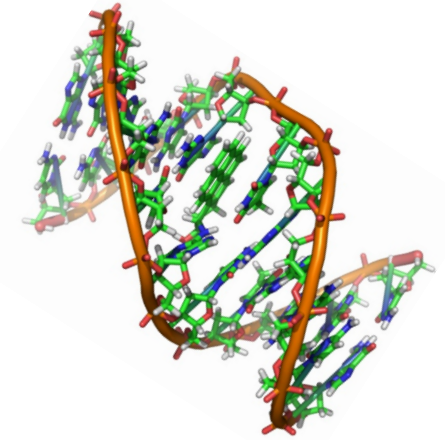


MeBOP

Middle Eastern Biology of Parasitism

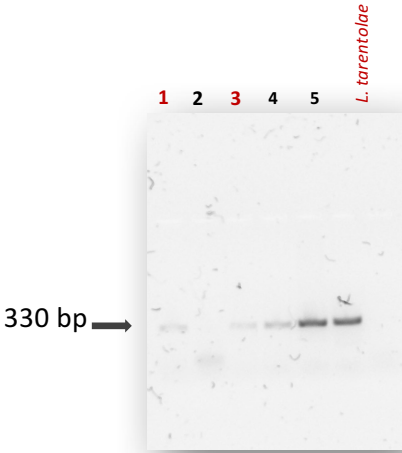
For students in the Middle East, North and Sub-Saharan Africa



DNA sequencing

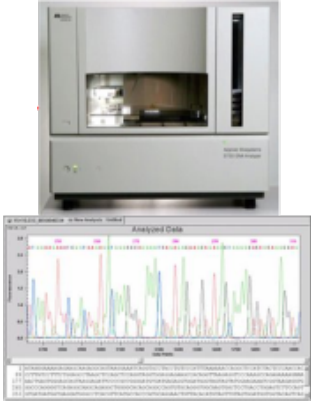
**Salama Al Hamidhi
& Imen Mkada**

PCR-ITS, sequencing & Blast



PCR ITS

sequencing



Blast

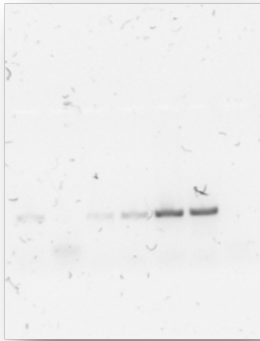


```
1MeP_ab1
1 ATC CAT CGC GAC ACG TTA TGT GAG CCG TTA TCC ACN CGN
```

```
>Seq ITS
GC GAC AC GGT TAT GT GAG CC GTT AT CC AC AC GC ACC C ACC CC GCC AAAAA ACC GAA AC GCC GT AT AT TTT TGT ATA AAC GG ACA
TG CTTT TGT AT AG GC GGT GC GTT ATA AC GTC GAT CG CC TTT TTT TTT ACT GCA AAT TTT GAG TACA AAA CT TTT GCT GT AT GT GG
GG CC TAC AT AT AT AC AT AG GT C TCC CC GAG TT GT AT AT GT TTT TTT GGG TGA AT CAT CG GAAA AT GAT CC AG AN CANTTC
```

L. tarentolae

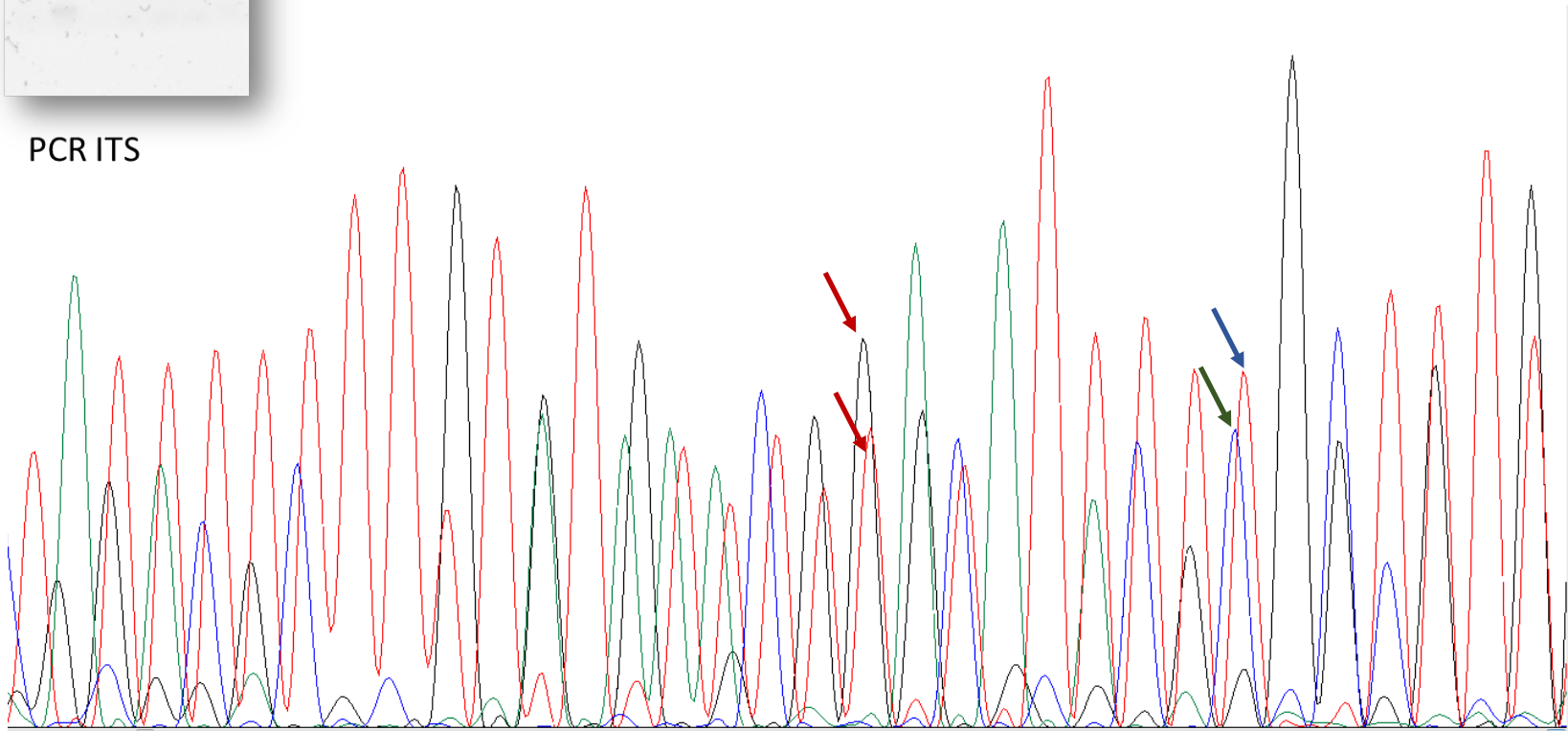
1 2 3 4 5

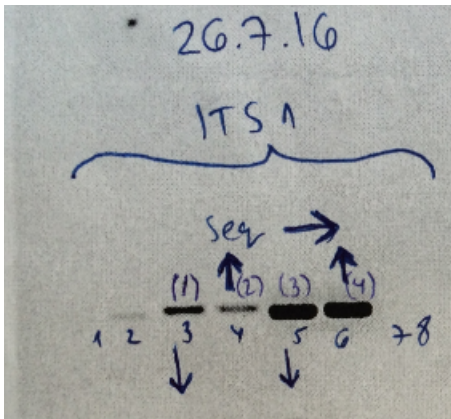


330 bp →

```
1MeP_ab1
1 ATC CAT CGC GAC ACG TTA TGT GAG CCG TTA TCC ACN CGN
```

PCR ITS

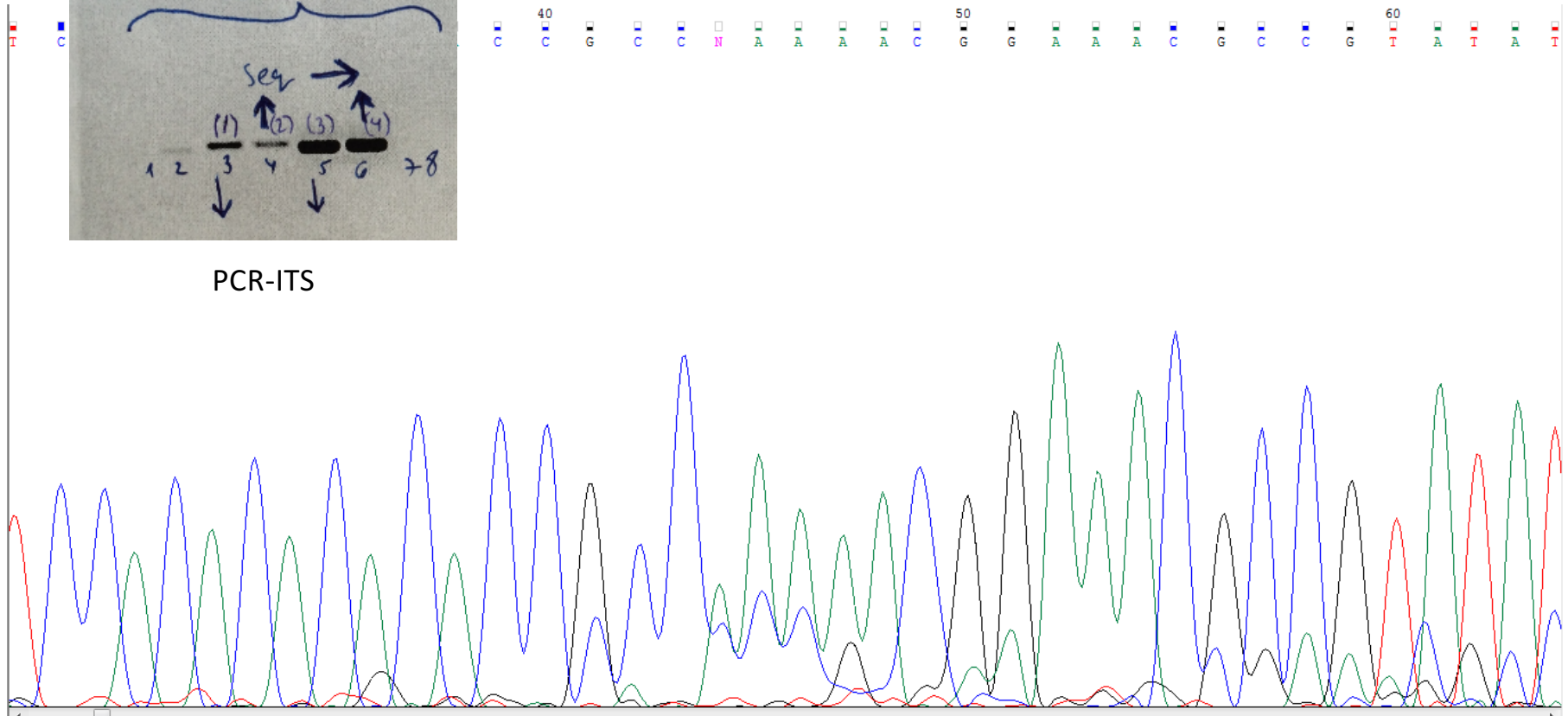




PCR-ITS

Sequence

```
>Seq ITS
GCGACACGGTTATGTGAGCCGTTATCCACACACGCACCCACCCCGCCAAAAACC GAAACGCCGTATTTTTGTATAAACGGACA
TGC TTTTGTATAGCGGTGCCGTTATAACGTCGATCGGCC TTTTTTTACTGCAAATTTTGAGTACAAAACTTGGCTGTGTATGTGG
GGCCTACATATATACATAGGTCCTCCCCGAGTTGTATATGTTTTTTGGGTGTAATCATCGGAAATGATCCAGANCANTTC
```



All results

Groups		Samples	Density of the band	Chromatographe	Identity %	Species
Mebop 1	1	Unknown	+	2 peak		
	2	Unknown	+	1 peak	231/254(91%)	<i>L. tarentolae</i>
Mebop 2	3	Unknown	+	1 peak	283/284(99%)	<i>L. major</i>
	4	C+ / <i>L. tropica</i>	+	1 peak	267/270(99%)	<i>L. tropica</i>
Mebop 3	5	Unknown	+	1 peak	265/265(100%)	<i>L. donovani</i>
	6	C+ / <i>L. infantum</i>	+	1 peak	259/259(100%)	<i>L. donovani</i>
Mebop 4	7	Unknown	++	2 peak		
	8	Unknown	+	2 peak		
	9	C+ / <i>L. tropica</i>	+++	2 peak		
Mebop 5	10	Unknown	+	1 peak	255/255(100%)	<i>L. donovani</i>