

Module I

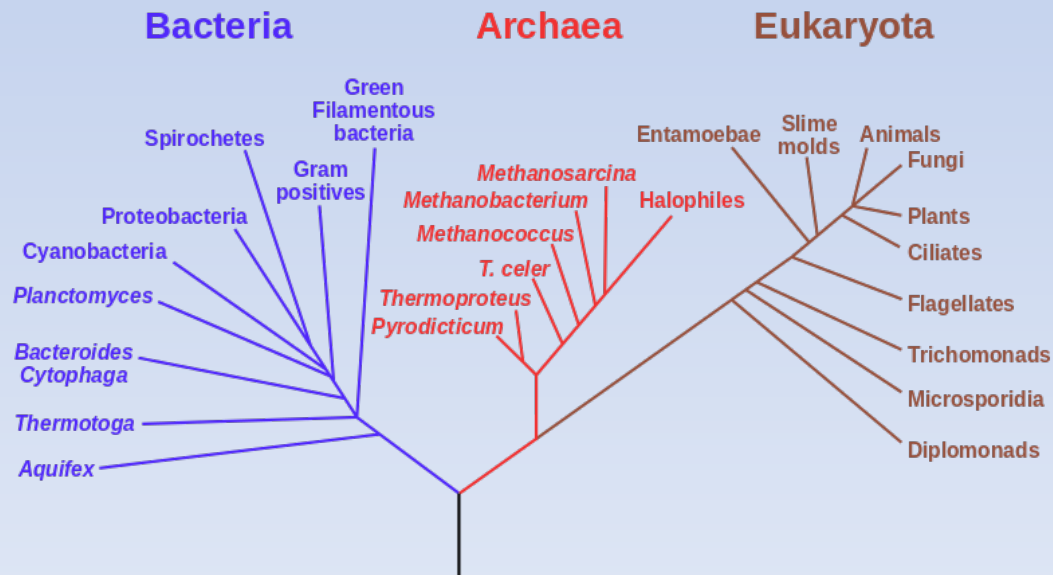
Leishmania parasite

Diagnosis, molecular identification and drugs
screening

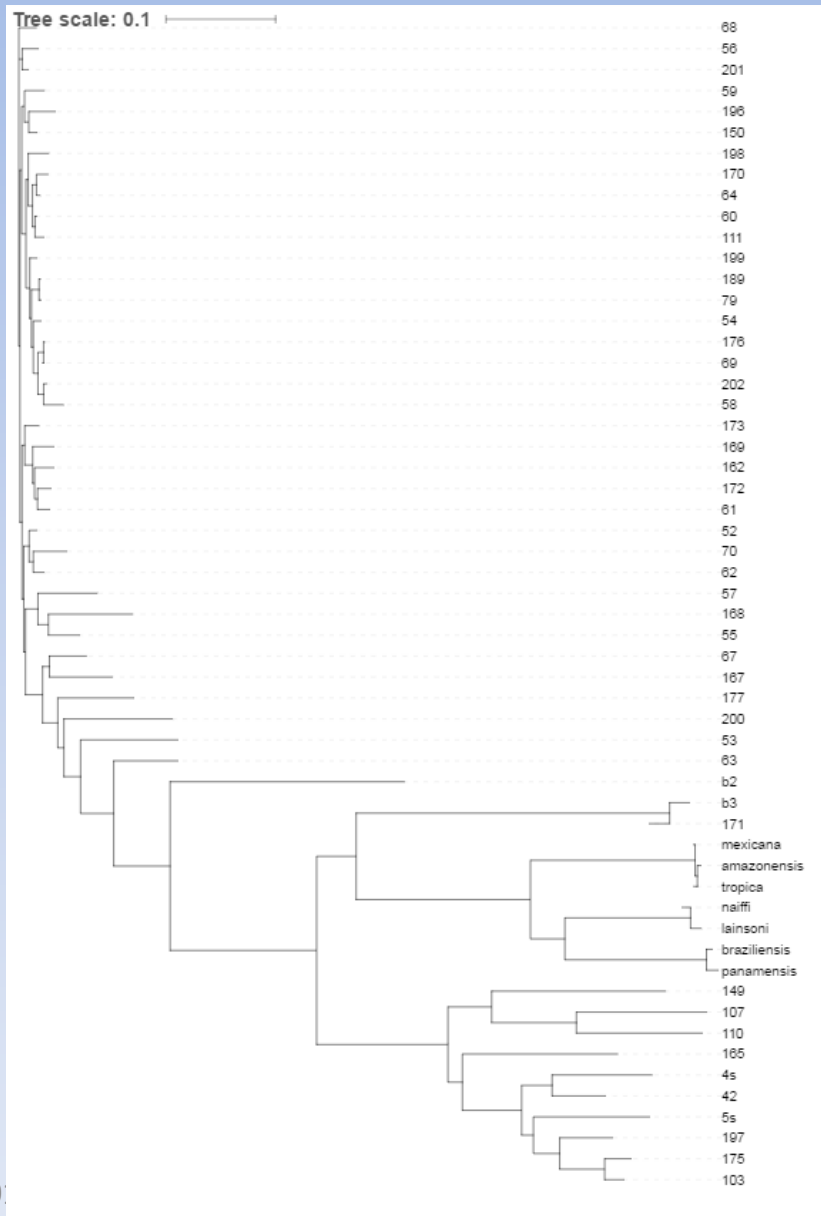
Phylogenetic Tree

A phylogenetic tree or evolutionary tree is a branching diagram or "tree" showing the inferred evolutionary relationships among various biological species based upon similarities and differences in their physical or genetic characteristics.

Phylogenetic Tree of Life

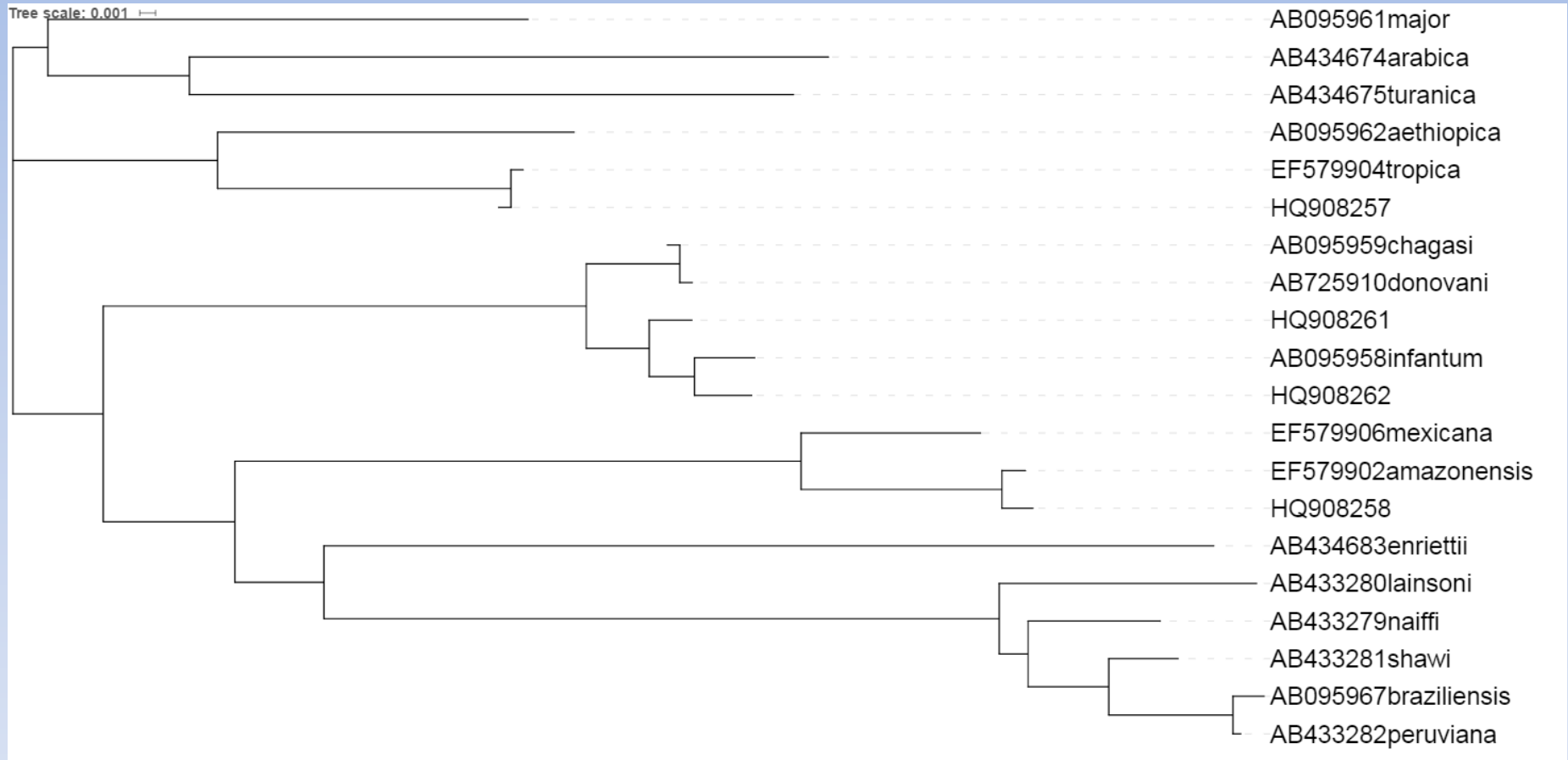


Phylogenetic Tree Based on *Leishmania* ITS1 Sequences



Clustal Omega
iTOL

Phylogenetic Tree Based on *Leishmania* Cytochrome B. Sequences



Clustal Omega
iTOL