

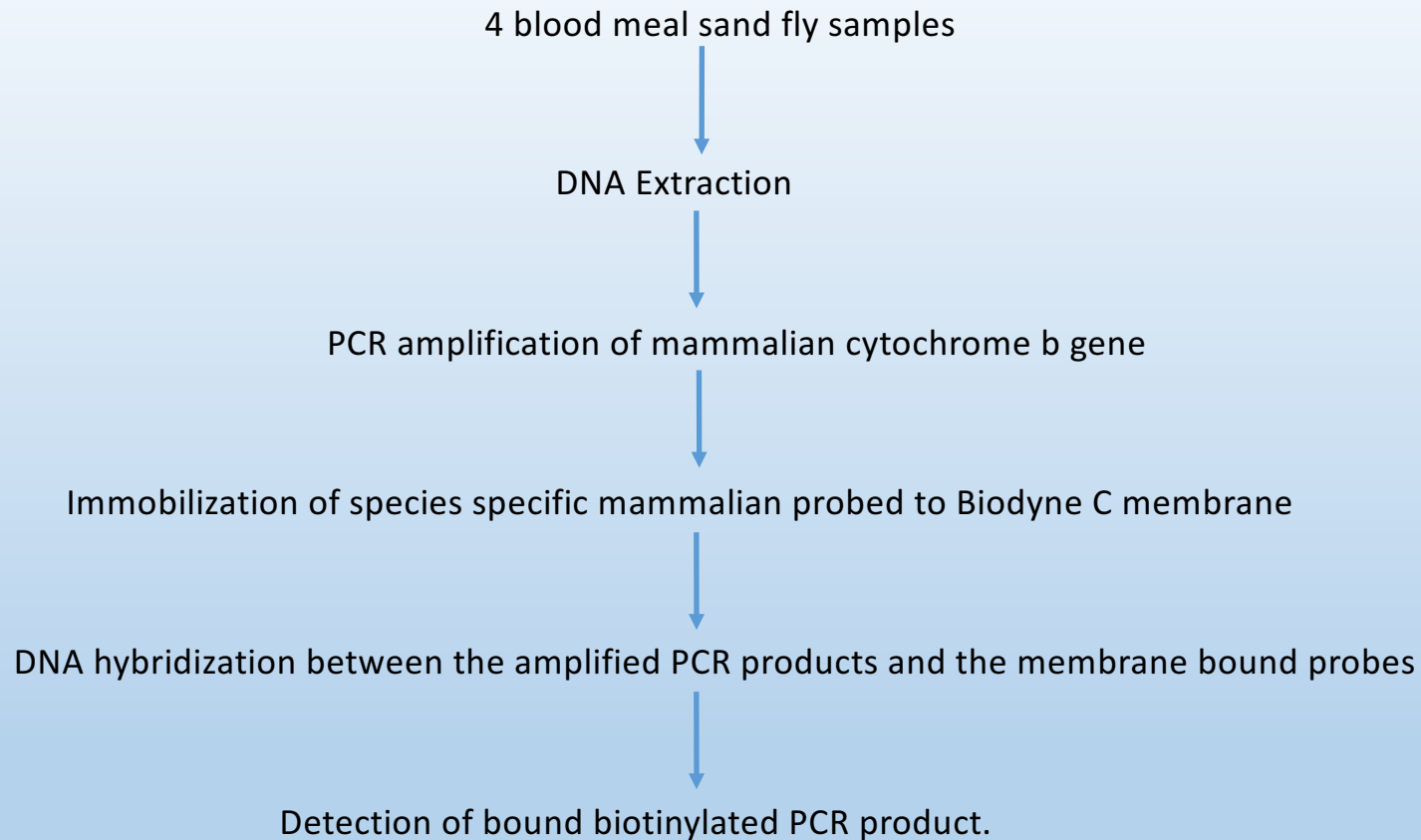
Blood meal analysis by Reverse Line Blot (RLB)

Amjed Alqaisi
Assef Hamdan

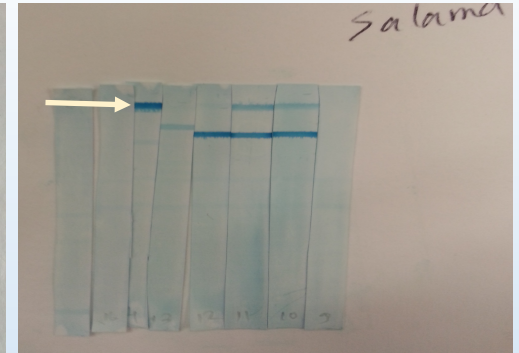
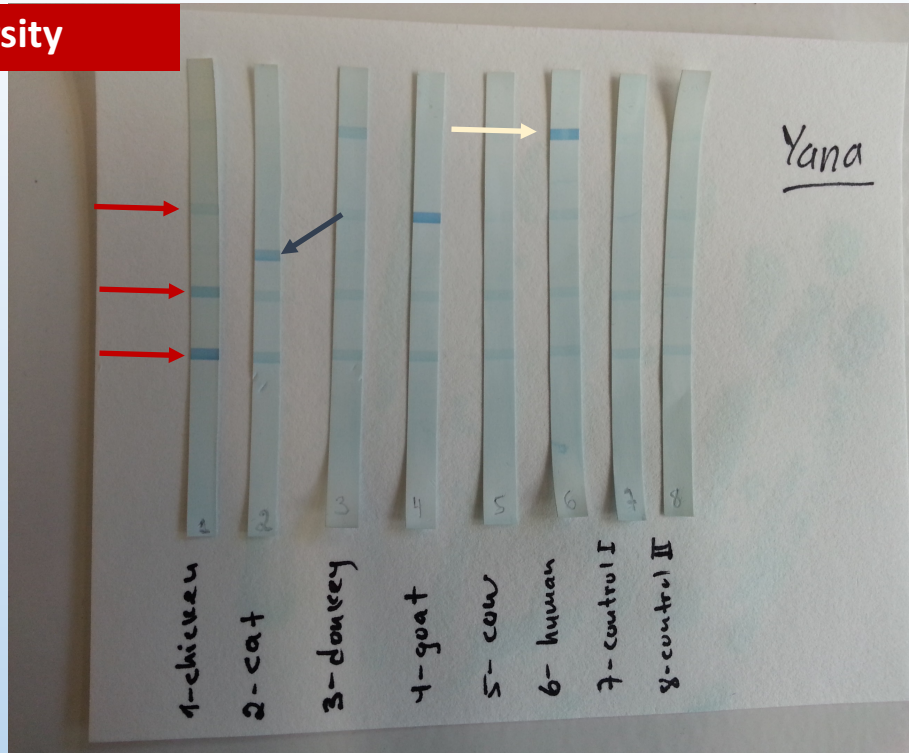
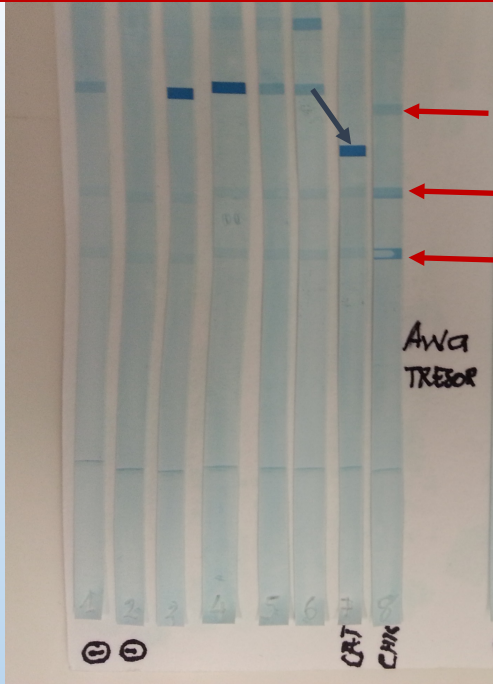
Goals:

Identification of host species by analysis of blood meals using RLB.

• MeBoP 2016\Bern University



• MeBoP 2016\Bern University



1. Human	3. Donkey	5. Goat	7. Cat	9. Chicken	11. Avian 1
2. Human	4. Cow	6. Camel	8. Dog	10. Sheep	12. Avian 1

Red Arrows = chicken samples ; **Blue Arrows** = cat samples ; **White arrows** = human

Advantages:

1. More sensitive.
2. Cheap.
3. Low PCR product.

Disadvantages:

1. Cross contamination.
2. Takes more time.