

Auto-regulation of PfSR1 in *Plasmodium* *falciparum*

Shany Assaraf

P.I: Ron Dzikowski

Department of Microbiology & Molecular Genetics,

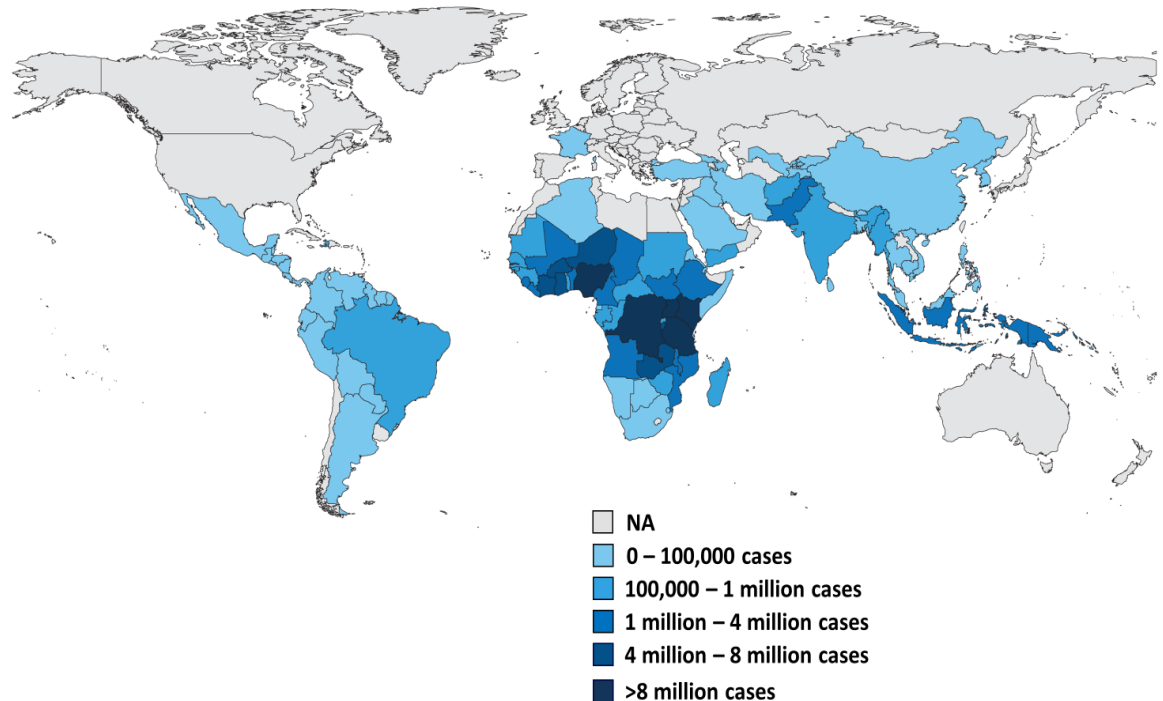
IMRIC, Hebrew University-Hadassah Medical

School, Jerusalem, Israel.

Plasmodium falciparum

- ◉ protozoan parasite responsible for deadliest form of human malaria
- ◉ Transmitted exclusively through the bites of *Anopheles* mosquitoes

Reported Malaria Cases, 2013



SOURCE: Kaiser Family Foundation, <http://kff.org/globaldata/>, based on WHO, World Malaria Report 2014; December 2014.

Ayia Napa

Homs

Syria



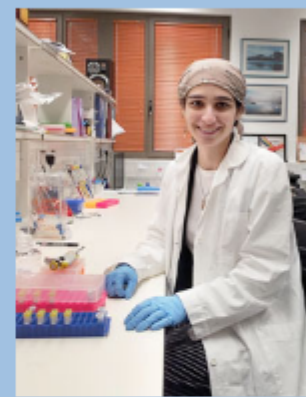
Prof. Ron Dzikowski
Primary Investigator
rond@ekmd.huji.ac.il



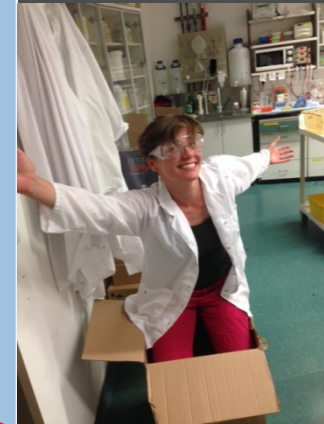
Dr. Yotam Kaufman
Research Associate
yotam.kaufman@mail.huji.ac.il



Dr. Brajesh Singh
Postdoc
kumars@ekmd.huji.ac.il



Dr. Adina Heindberg
Postdoc
adina.heindberg@mail.huji.ac.il



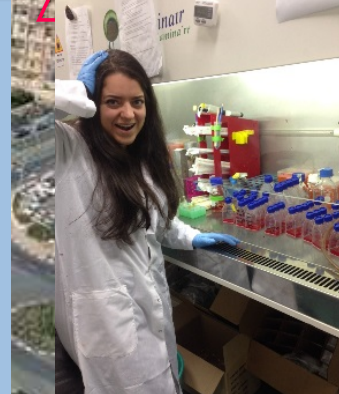
Malaria is in my blood



Sofiya Kandelis
Ph.D. candidate
sofiyak@ekmd.huji.ac.il



Yair Fastman
Ph.D. candidate
yairf@ekmd.huji.ac.il



M.A (and PHD)

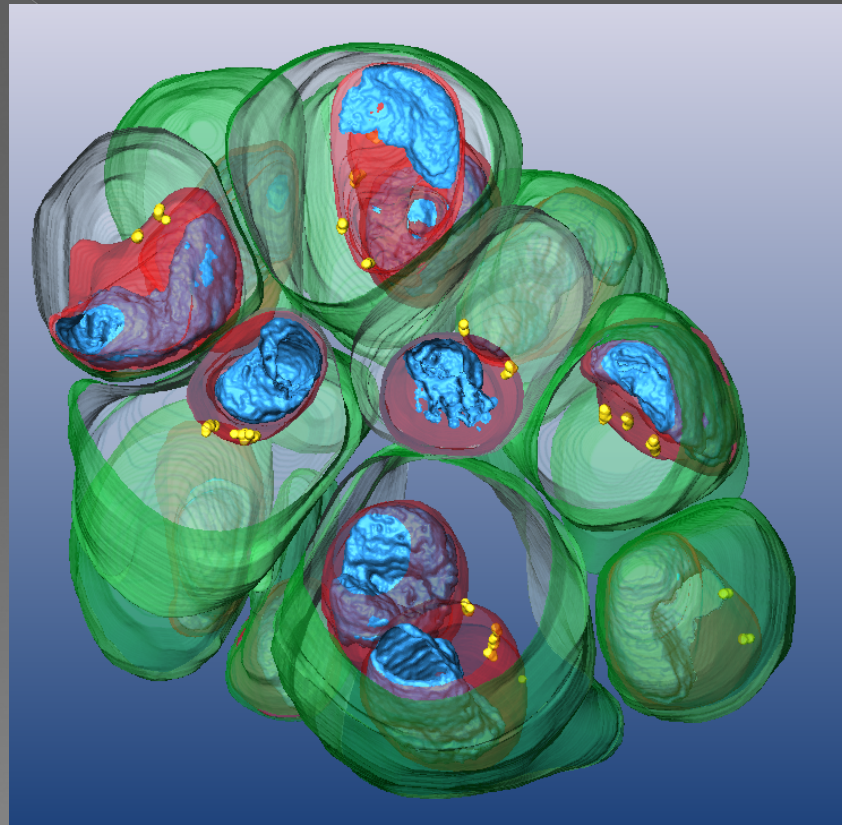
55

80

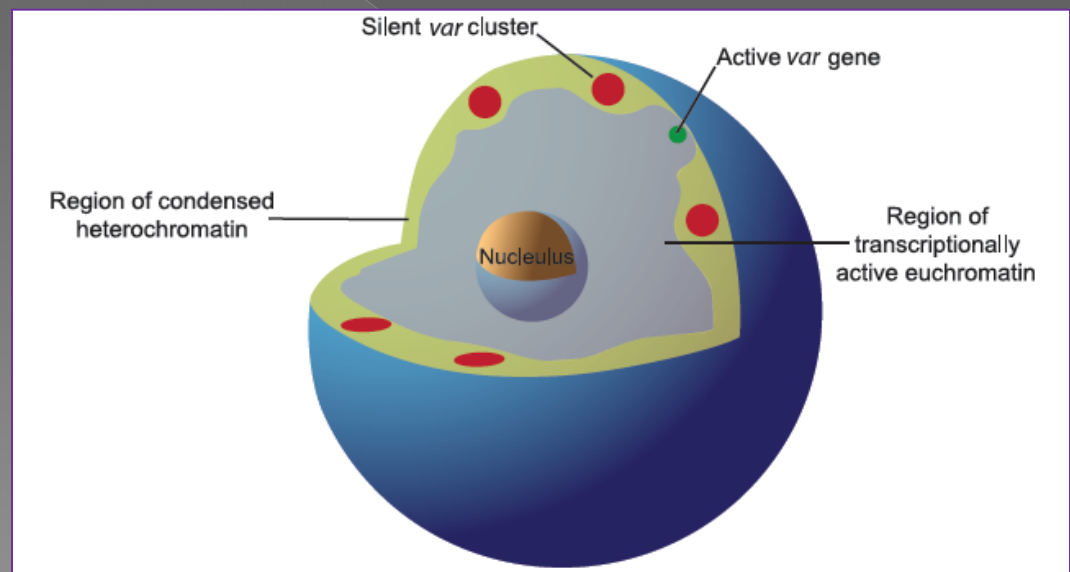
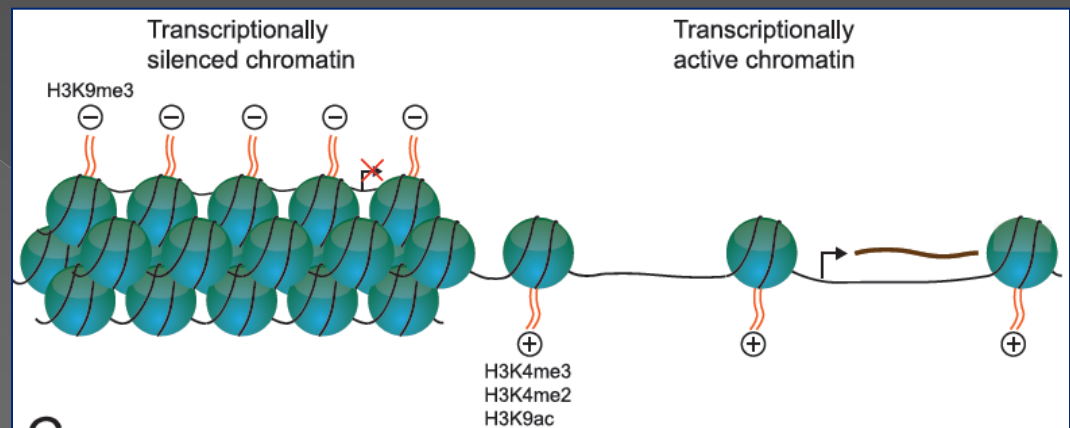
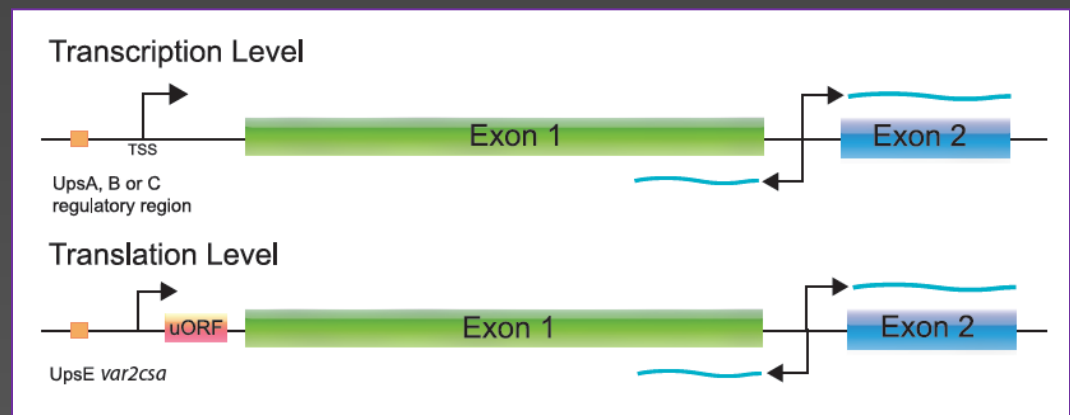
Al Hanan
Wildlife
Sanctuary

The main research questions in my lab

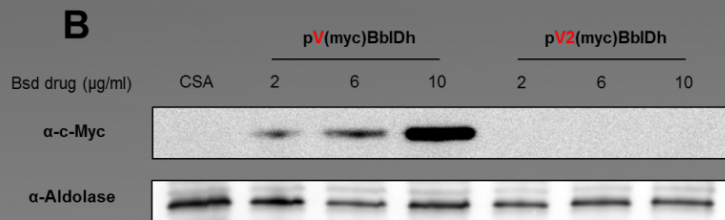
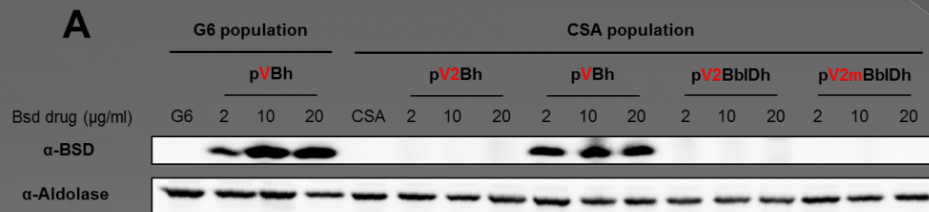
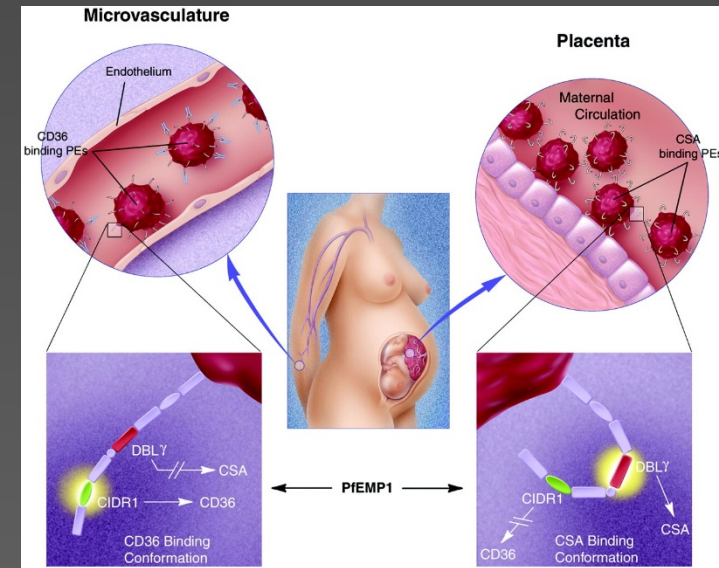
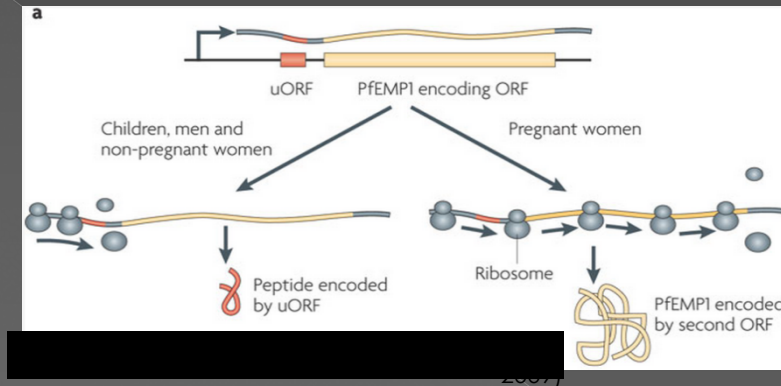
Gene regulation in *Plasmodium* parasites



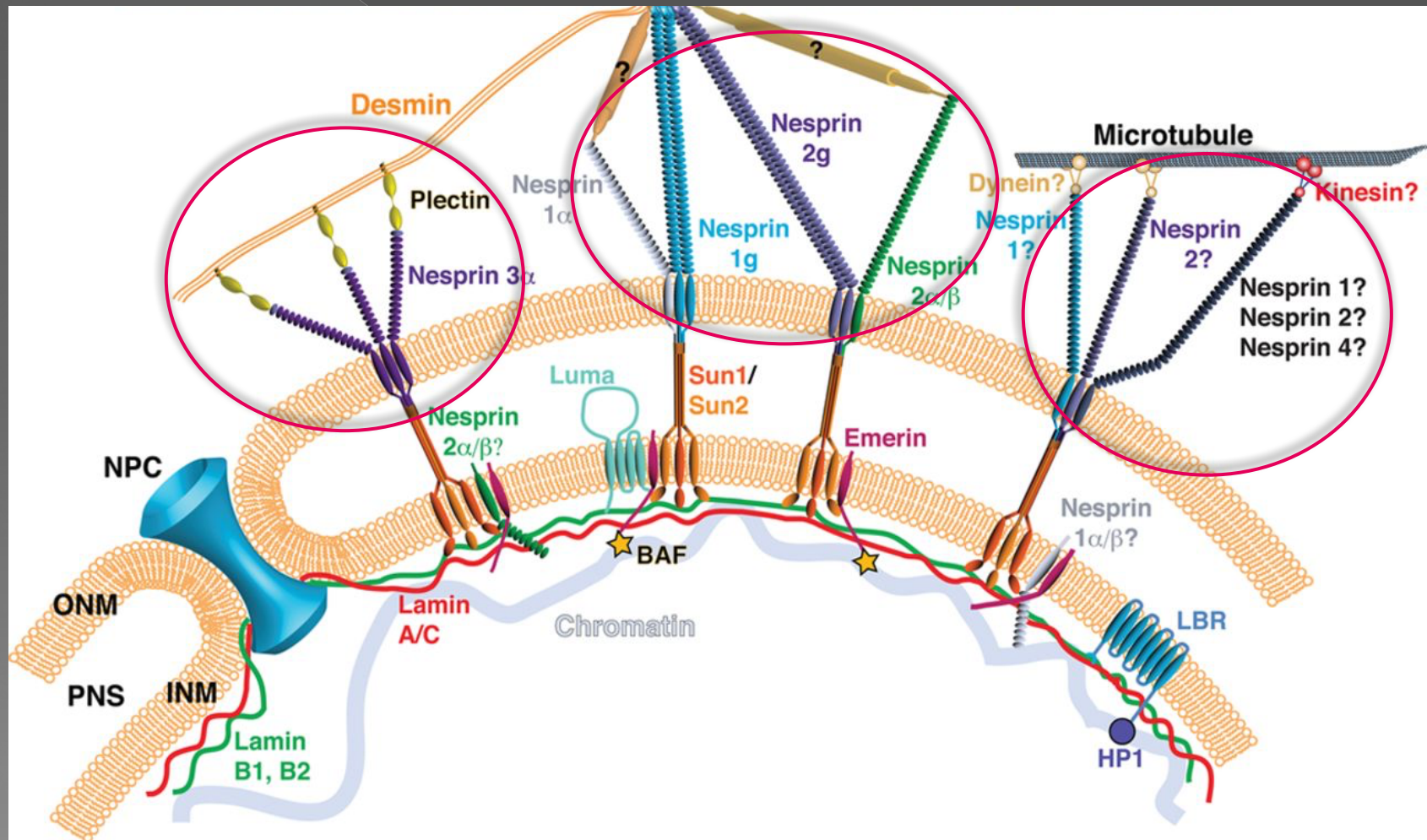
Mechanisms involved in the regulation of *var* gene transcription: Repression and activation



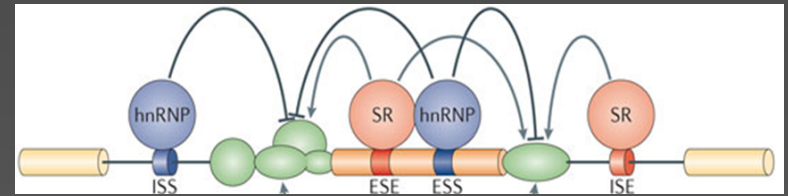
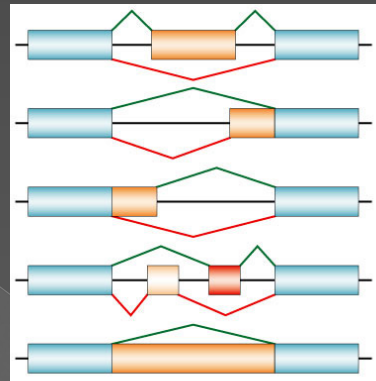
Regulation of *var2csa*, the gene responsible for pregnancy associated malaria



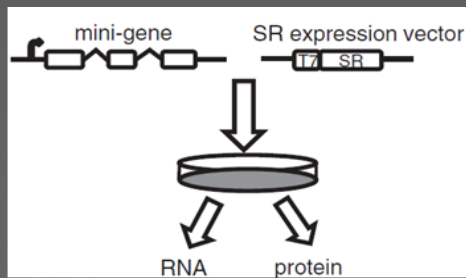
Role of KASH-domain proteins in regulating nuclear dynamics



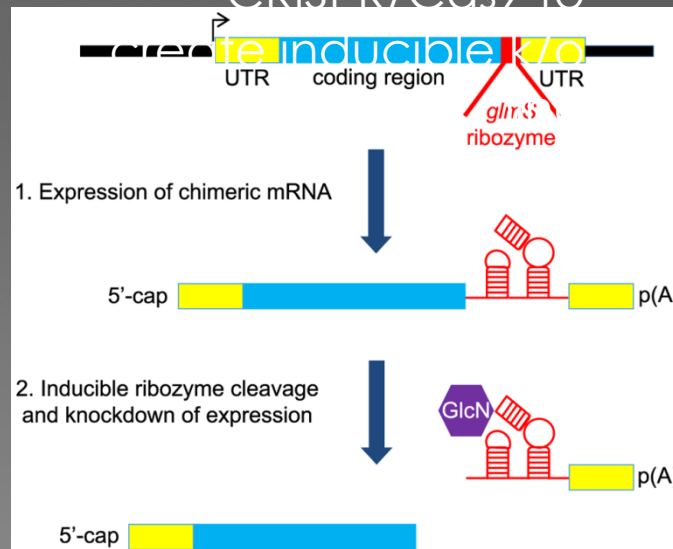
The role of alternative splicing in Plasmodium biology



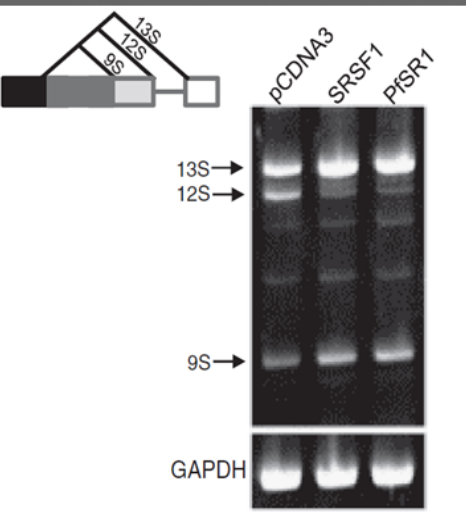
SR proteins are regulators of alternative splicing



Used the CRISPR/Cas9 to

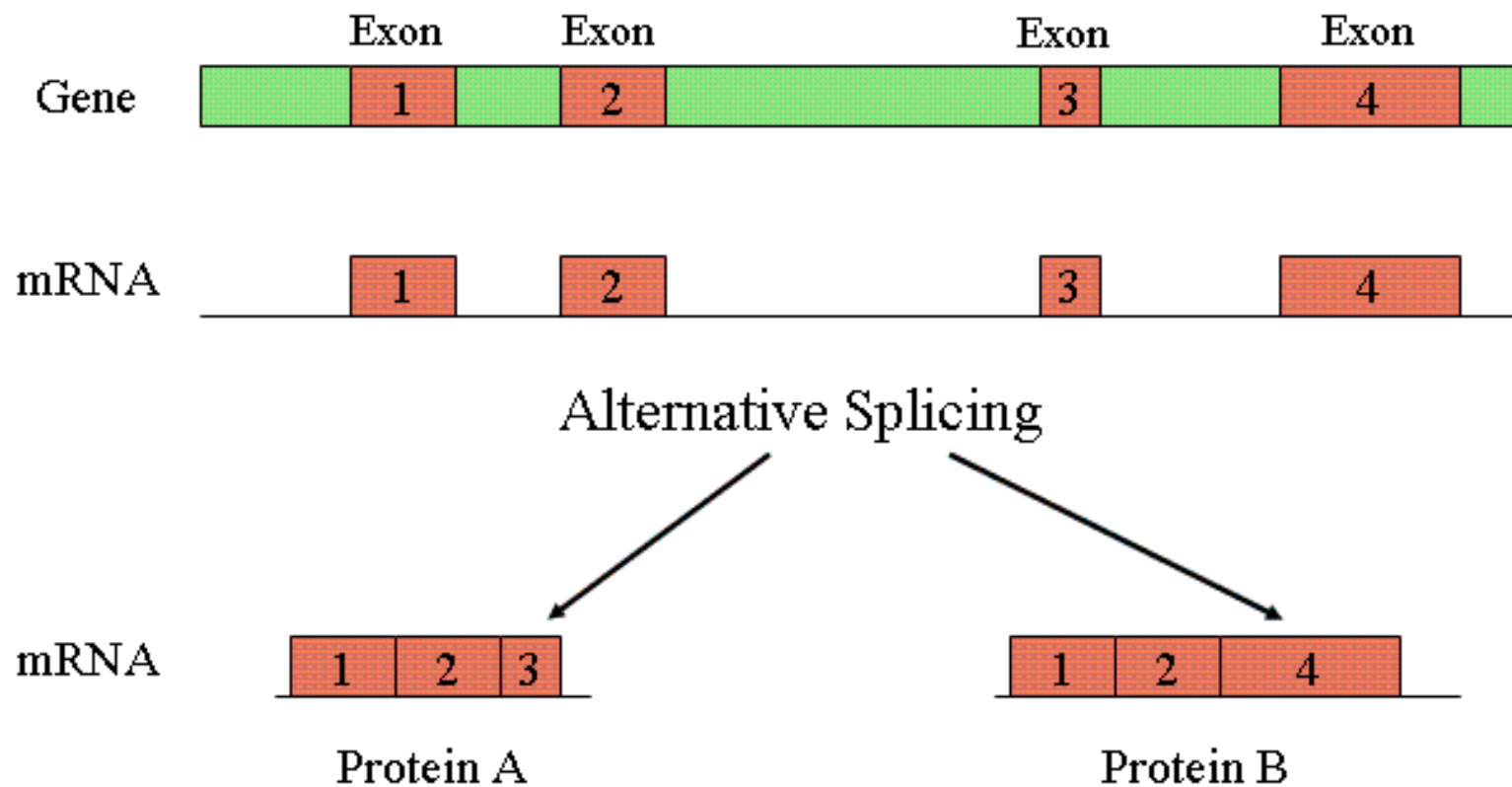


Use transgenic lines to:
 Proteomics – (1)
 interacting proteins
 RNA-seq – changes in (2)
 AS and transcription
 CLIP-seq – RNAs that (3)
 are bound by PfSR1

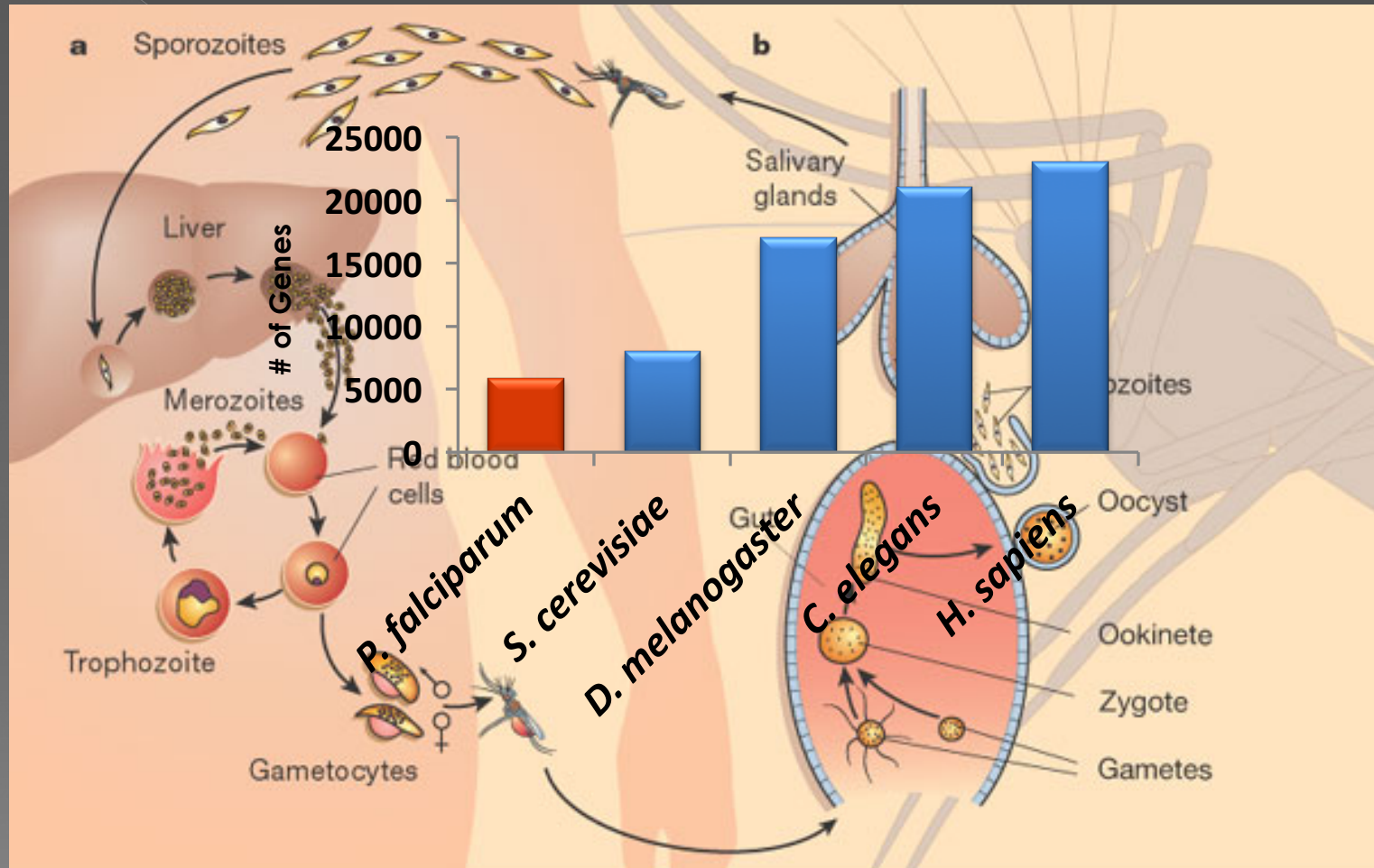


Eshar et al, NAR
2012

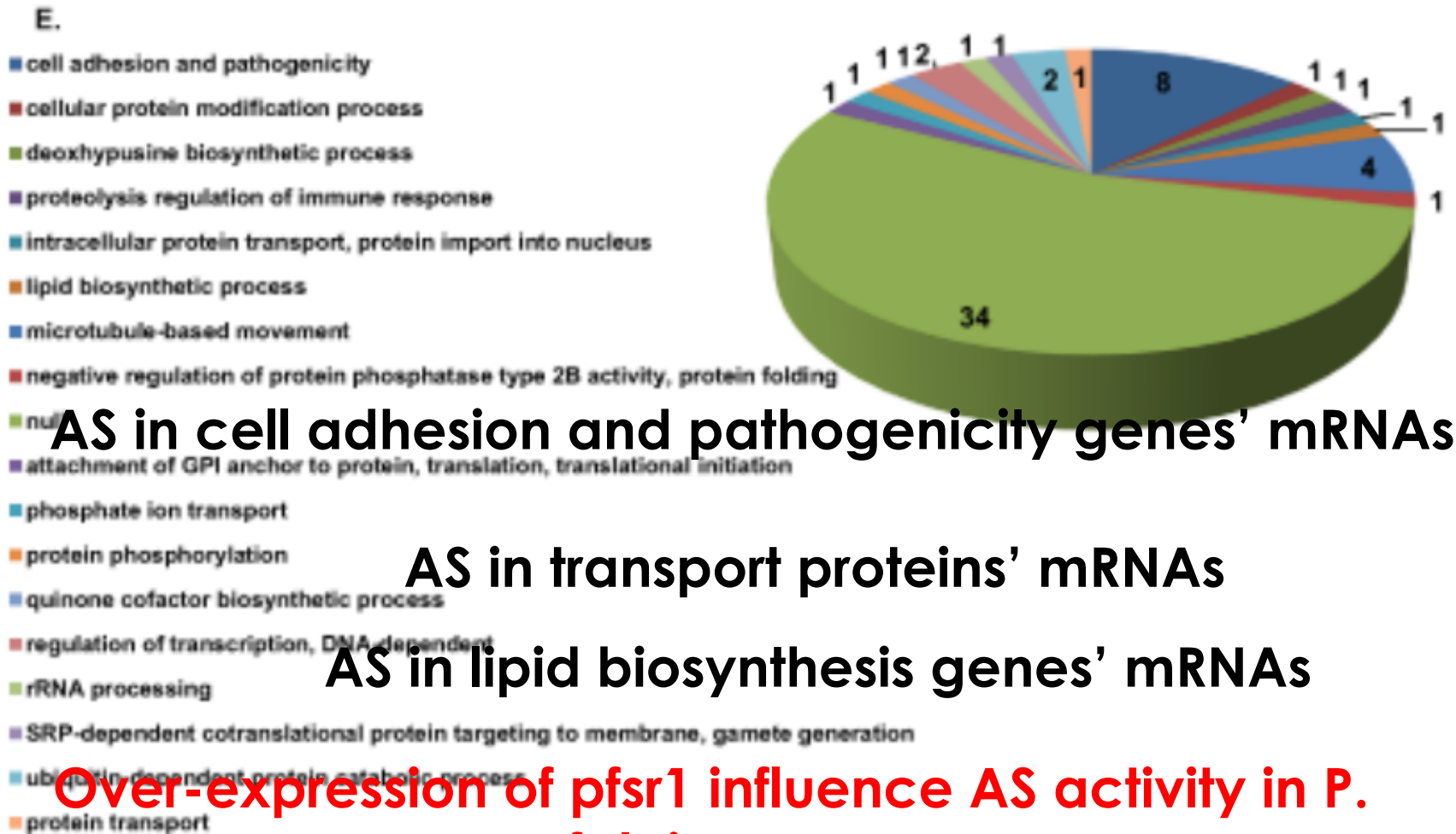
Alternative splicing



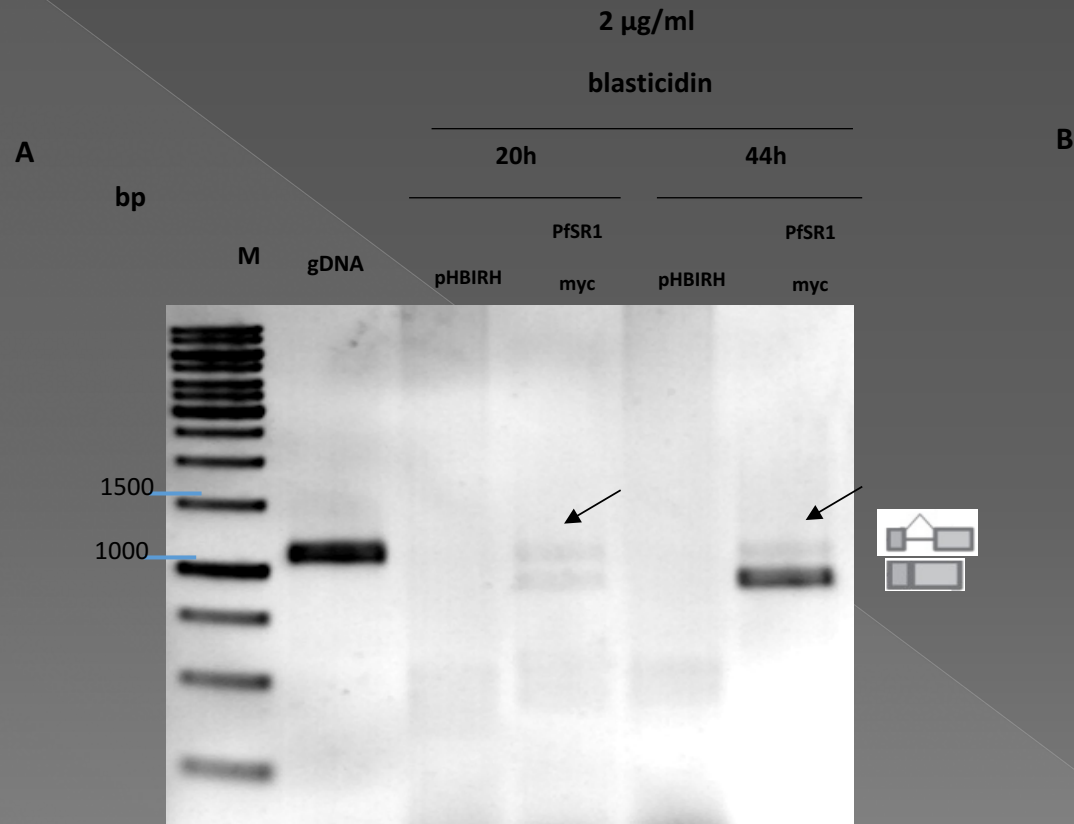
Alternative splicing



pfSR 1



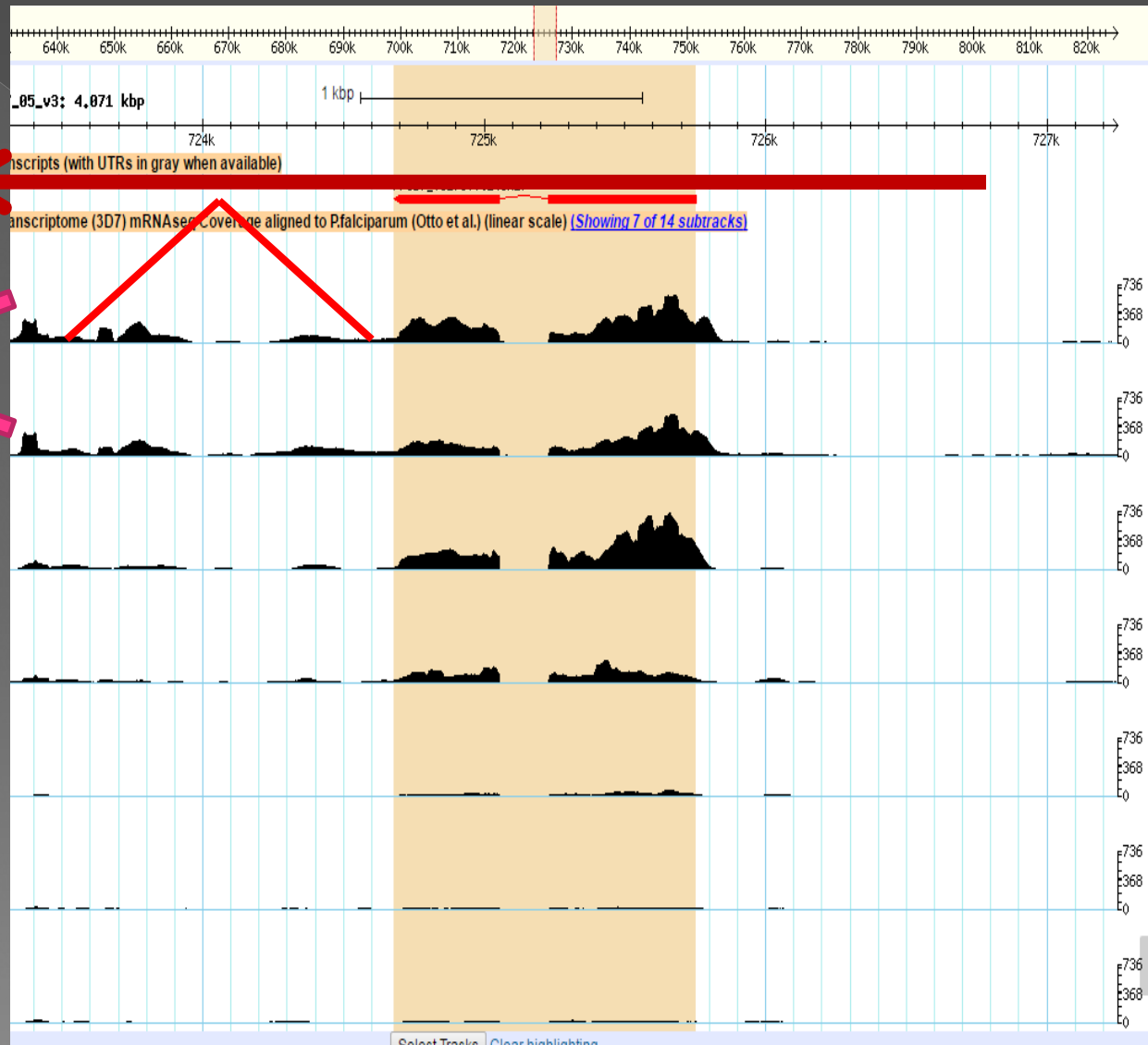
Pfsr1 autoregulation



Arginyl-tRNA
synthetase

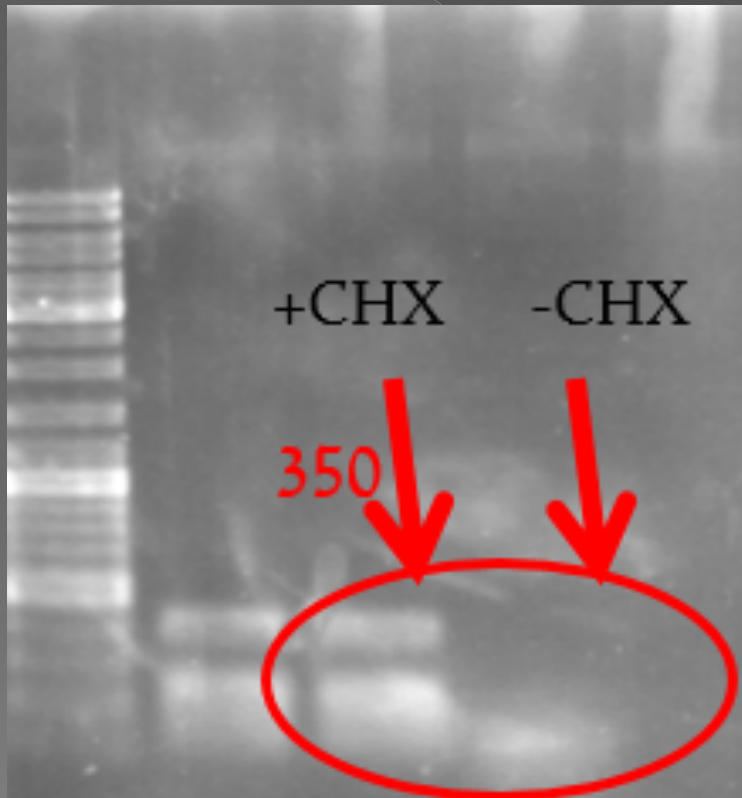


Early stages

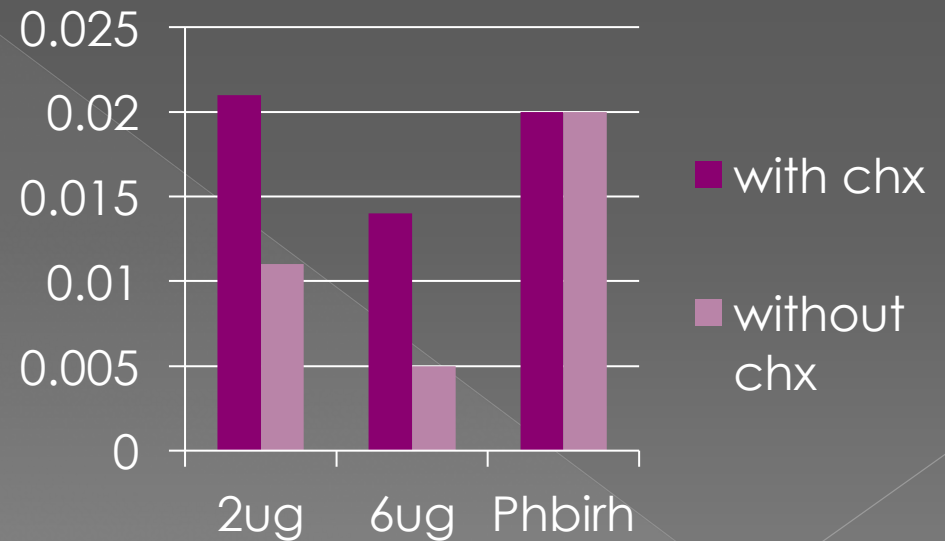


RNA seq. by Otto et al.




CHX experiment



Relative
copy number



My project right now

- ◉ CHX 
- ◉ WB- protein level 
- ◉ qRTpcr- for showing that 
increasing of exogenous pfsr1
leads to a decrease in
The endogenous pfsr1
- ◉ Upf1 knockdown->
waiting for WR selection

Difficulties and strengths

- ◉ In order to follow up changes in AS during KD, we need to analyze RNAseq of the full genome. In our lab there is a difficulty doing so.
- ◉ Improving my Bioinformatics skills, and analyzing data.
- ◉ Experienced in molecular biology methods.

